



**CONTAINER OFFICE**  
**CONTAINER VILLA/HOTEL**



**CONTAINER HOUSE**  
**STEEL STRUCTURE**  
**PREFAB LABOR CAMP**



**FORMING ACCESS AND SUPPORT, INC.**

Address: 1407-E, Angono St. cor. Osmeña St., Brgy. Poblacion, Makati City, Philippines

Contact: Jose Cruz

Mobile: +63 917 318 6190

Tel. No.: +632 8519 9901

Email: [info@fasiformsystem.com](mailto:info@fasiformsystem.com)

Website: [www.fasiformsystem.com](http://www.fasiformsystem.com)



Labor camp
Container House
Container Home
Steel Structure
Steel Villa
Portable Toilet

## Introduction:

Guangdong **Wellcamp** Steel Structure&Modular Housing Co.,Ltd, is a 100 % exporting factory which has more than 14 years experience in prefab houses industry. Our factory is located in Zhaoqing City Guangdong, China, area 20000m2 and office located in Foshan, Guangdong, China, where is famous for all kinds of construction materials, furnitures & aluminum products.

We have four production lines, folding container house, flat pack container house, steel structure and sandwich panel production lines. WELLCAMP is the **No.1** Folding Container House Manufacturer in China. We have the **LARGEST Folding Container house** Sales to oversea markets.

Our products including Container Houses, Container Homes, Container School, Container Office & Hotel buildings, Prefab Labor camps, Steel Structures, Light Steel Villas, Portable Toilets & Security Posts.

Our quality system has been audited for CE, UL, ASTM, BV, SGS & ISO9001:2015 and we all obtained reports of approval. Our enthusiastic sales teams&international installation teams are well known in prefab house industry. We have confidence to turn every one of our business into a happy long-time cooperation.

Our major markets are Middle East, Africa, South America & South-East Asia. We have successfully completed many projects in Thailand, Philippines, Malaysia, Oman, Qatar, Saudi Arabia, Uruguay, Congo, Brazil, Mexico, Argentina, Chile, USA, Germany, Japan and so on.

## WELLCAMP CERTIFICATES



BV



UL



CE



ISO



ASTM



Patent 1



Patent 2



Patent 3



SGS



Innovation Award



International Brand



SGS

## Wellcamp Fast Build Modern **Container Mall**



Container commercial street



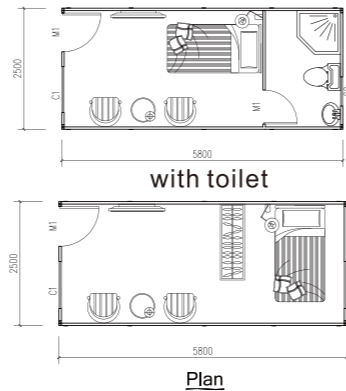
# FOLDING CONTAINER HOUSE (CAMP)



Size: 2.5M X 5.8M X 2.6H

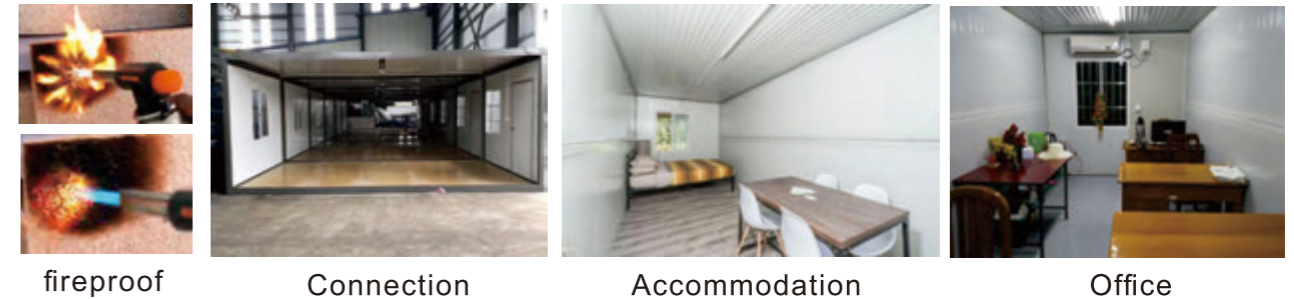
## Features:

1. 4 minutes can install 1 house.
2. Galvanized steel structure.
3. 40mm fireproof IEPS sandwich panel for wall & 100mm glass wool for roof.
4. Aluminum sliding windows with security bar.
5. Fireproof IEPS sandwich panel door.
6. 18mm MGO board for floor.
6. When is folded, the height is only 350mm.



# REFUGEES HOUSING

*Fast Build*



## Projects:



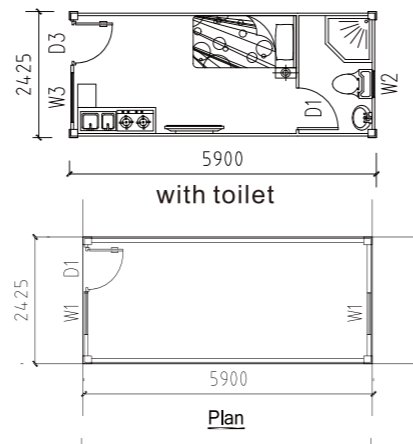
# FLAT PACK CONTAINER HOUSE

(This flat pack container house is popular used for office, dormitory & shop.  
Loading: 1x40HQ can load 10 sets.)



## Features:

1. Come with completed roof & floor.
2. Electric wires run over ceiling, including DB, breaker, power inlet & sockets.
3. Fully Galvanized Steel Structure.
4. 50MM IEPS sandwich panel for wall & 100mm glass wool for roof.
5. Steel door & UPVC double glass windows with security bar.
6. PVC modern indoor lining.



## Installation:



## — Typical Projects —



- Container villa
- Container dormitory
- Container office
- Container hotel



# DETACHABLE CONTAINER HOUSE

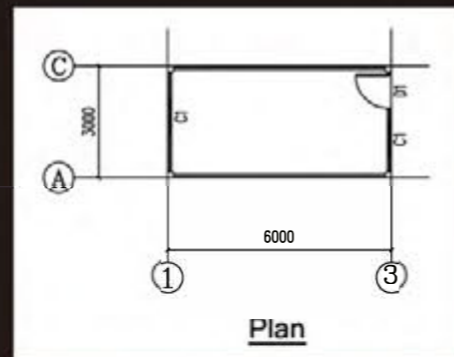
(This container house is widely used for office, apartment & shop.  
Loading: 1x40HQ can load 13 units.)



## Features:

1. Galvanized steel structure.
2. 50mm fireproof IEPS/EPS/Glass wool sandwich panel for wall.
3. 0.476mm steel sheet+100mm glass wool+ steel sheet ceiling for roof.
3. Double glass aluminum sliding windows.
4. Steel door.
5. 18mm MGO board for floor.
6. Optional design. Outside with corrugated shape&inside with wooden coating.

- 1. Separate steel structure.
- 2. Can load in 20ft container.
- 3. Customized size.
- 4. No need crane to install.



3MX6MX2.8H

## Projects:



# SHIPPING CONTAINER HOUSE

(This shipping container house is popular used for villa resort , hotel, office, accommodations & shops.)

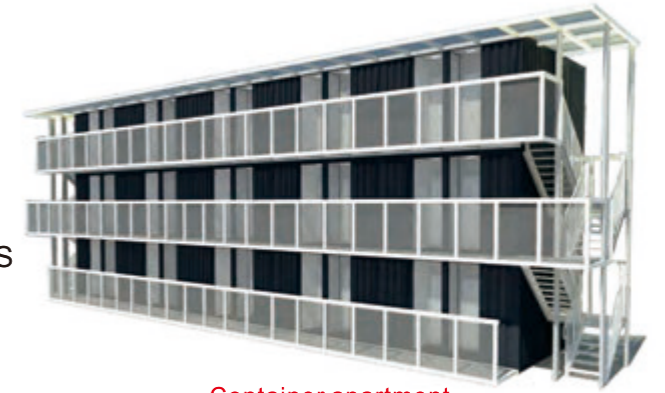


Size:2.438MX6.058MX2.896H



## Features:

1. Structure: 20' HQ Shipping Container.
2. Flooring: 28mm Plywood + 3mm PVC Vinyl / WPC panel.
3. Ceiling: Corrugated steel sheet + 50mm AEPS sandwich panel + WPC ceiling.
4. Wall: Corrugated steel sheet + 50mm AEPS/IEPS sandwich panel.
5. Door: AEPS sandwich panel doors (With Smart card )+ Glass doors.
6. Balustrade: Square tube + Glass.



Container apartment

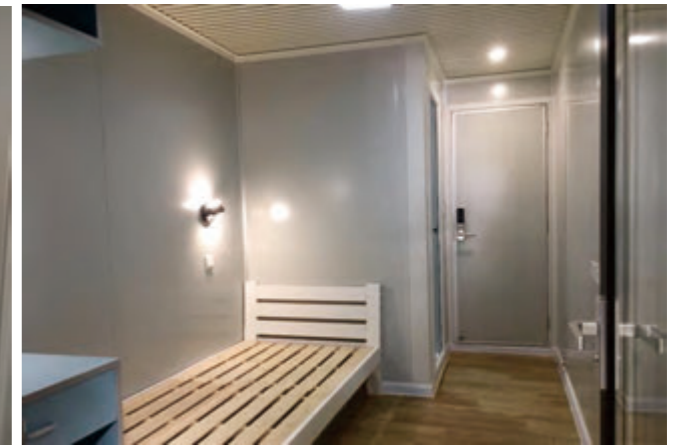
## Inside:



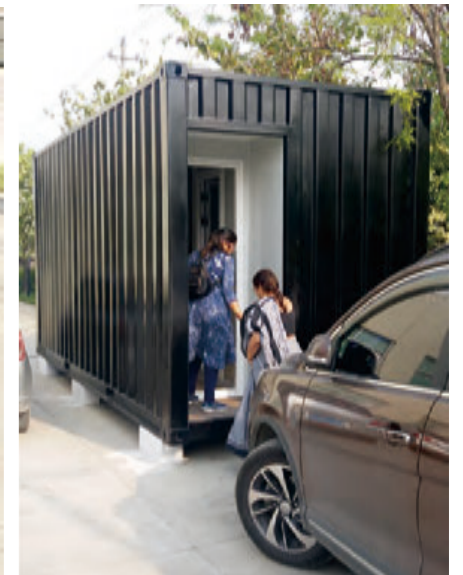
Toilet



Bedroom



## Transportation:



# EXPANDABLE CONTAINER HOUSE

(This expandable container house is widely used in Emergency Function, Disaster Relief, Remote Site Deployment, Field Clinic, Site Offices etc.)



6 People install 1 house within 3 hours



20FT

5.8m



11.8m

40FT expandable container

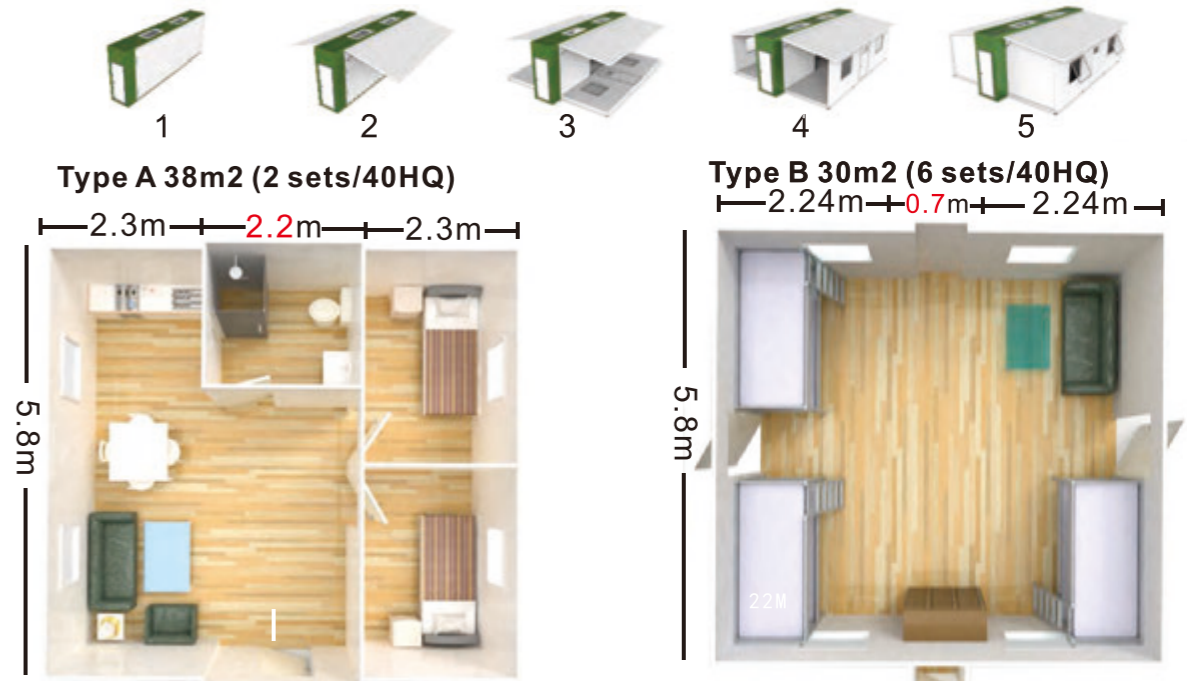
## Features:

- 1.Floor: Steel structure+Plywood +PVC vinyl flooring.
- 2.Wall: 50mm EPS sandwich panel.
- 3.Roof: Fiberglass sandwich panel.
- 4.Window: Aluminum casement windows.
- 5.Door: Sandwich panel doors or aluminum sliding door..



5 steps 3 hours a home

## Plans:



Opening Size:5.8MX6.68MX2.5H  
Closing Size:5.8MX2.2MX2.5H

Opening Size:5.8MX5.184MX2.5H  
Closing Size:5.8MX0.7MX2.5H



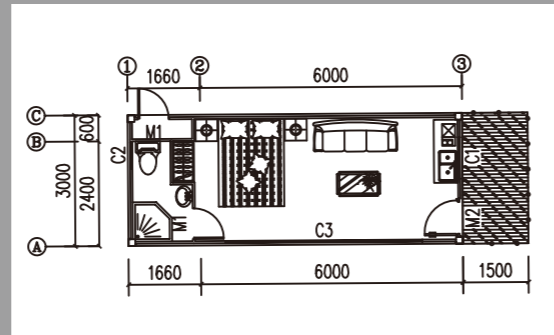
## Inside decoration



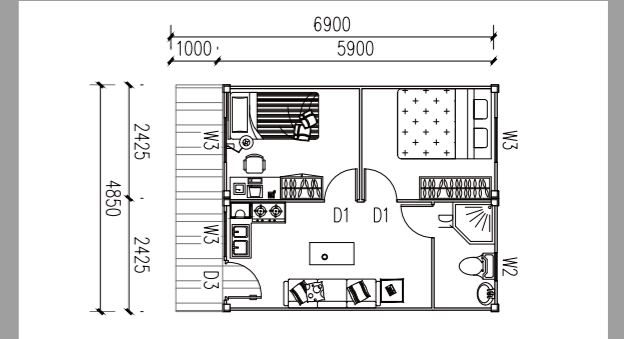




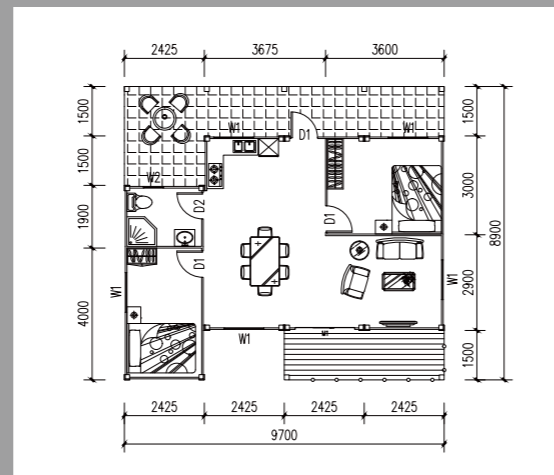
Living room, bedrooms, toilet, kitchen



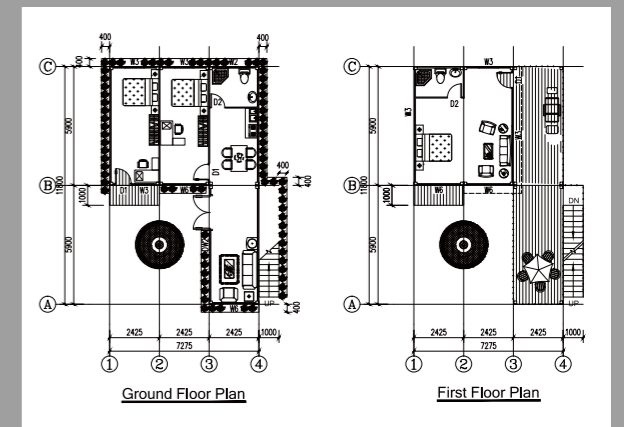
Type A: 3MX7.66MX2.8H



Type C: 4.85MX6.9MX2.8H



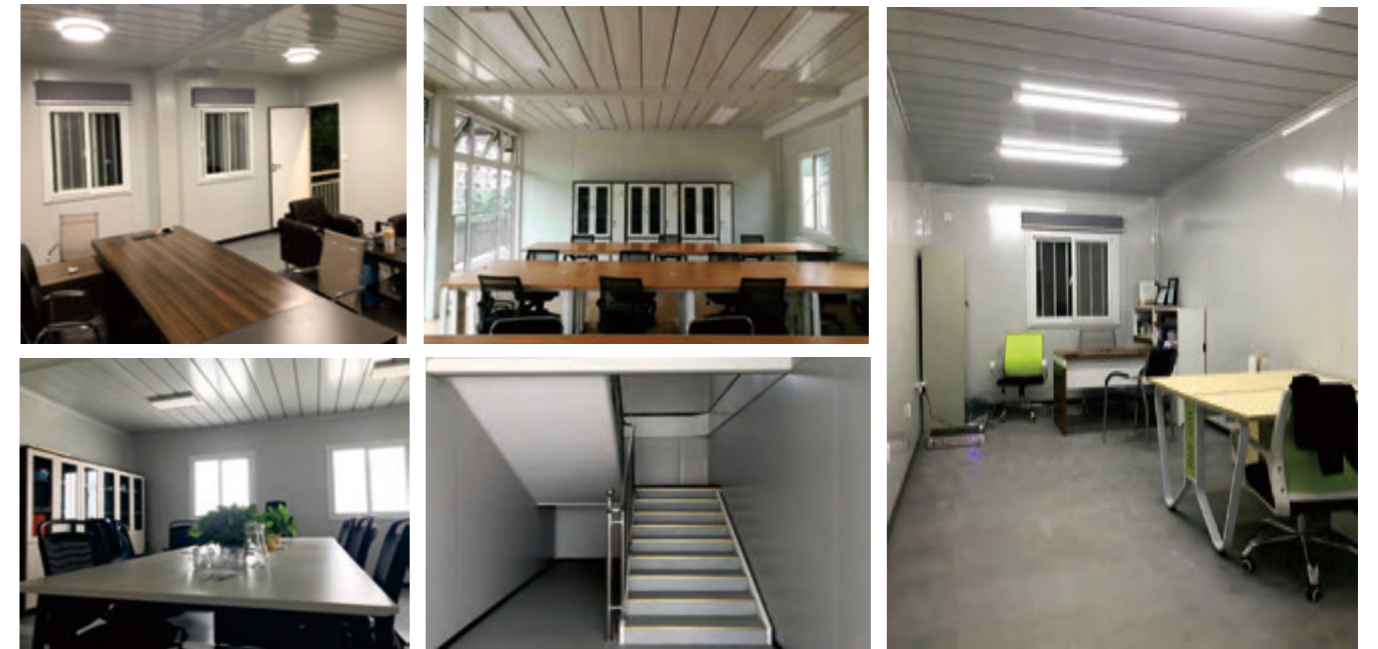
Type B: 8.9MX9.7MX2.8H



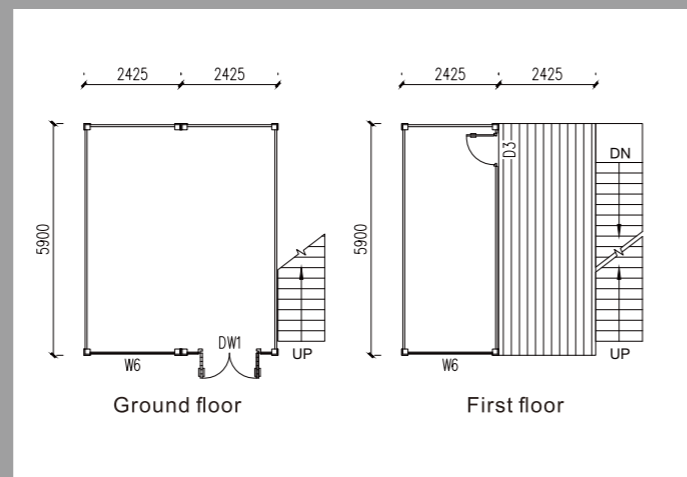
Type D: 7.275MX11.8MX5.6H



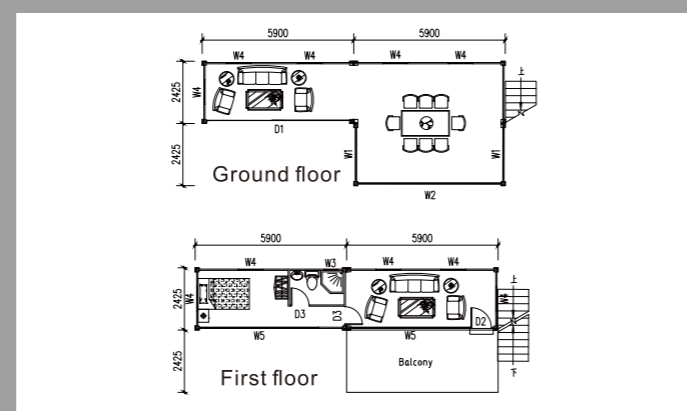
CONTAINER OFFICE



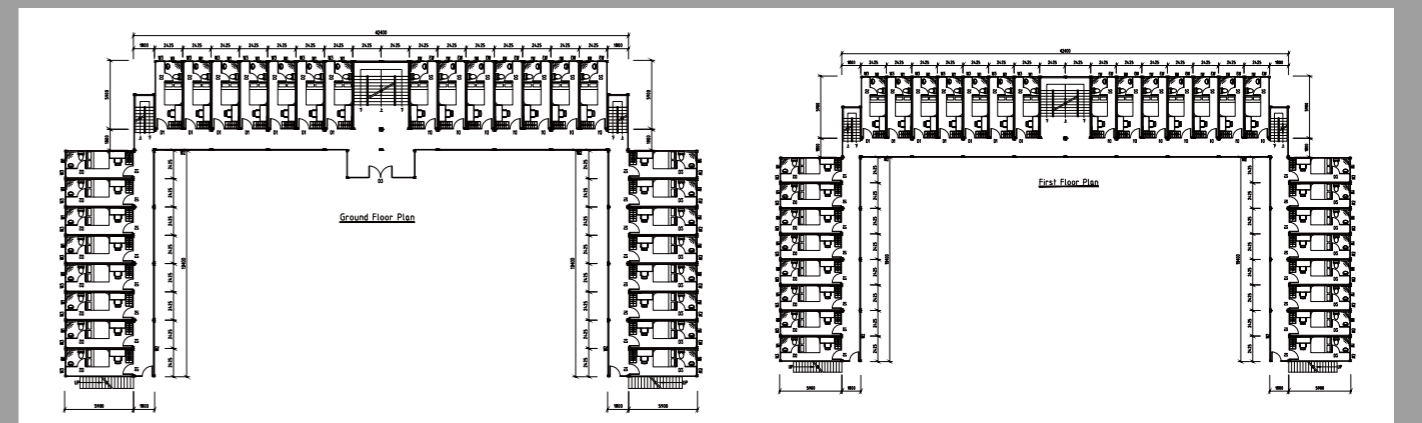
Manager room,office,reception room, meeting room,toilet



Type A: 4.85MX5.9MX5.6H



Type B: 4.85MX11.8MX5.6H



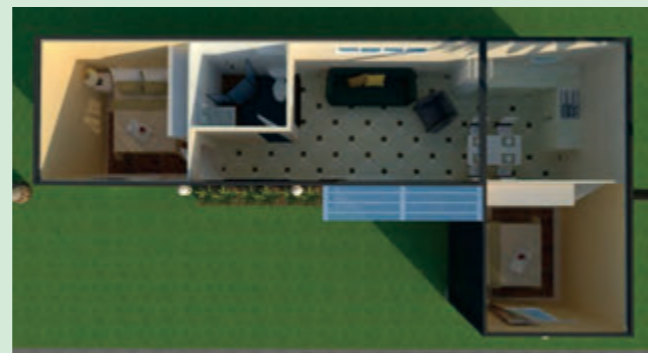
Type C: 7.7MX42.4MX8.4H

# CONTAINER VILLA

(This container villa resort is made by the Detachable container house.)



6MX15MX2.8H (Three bedrooms)



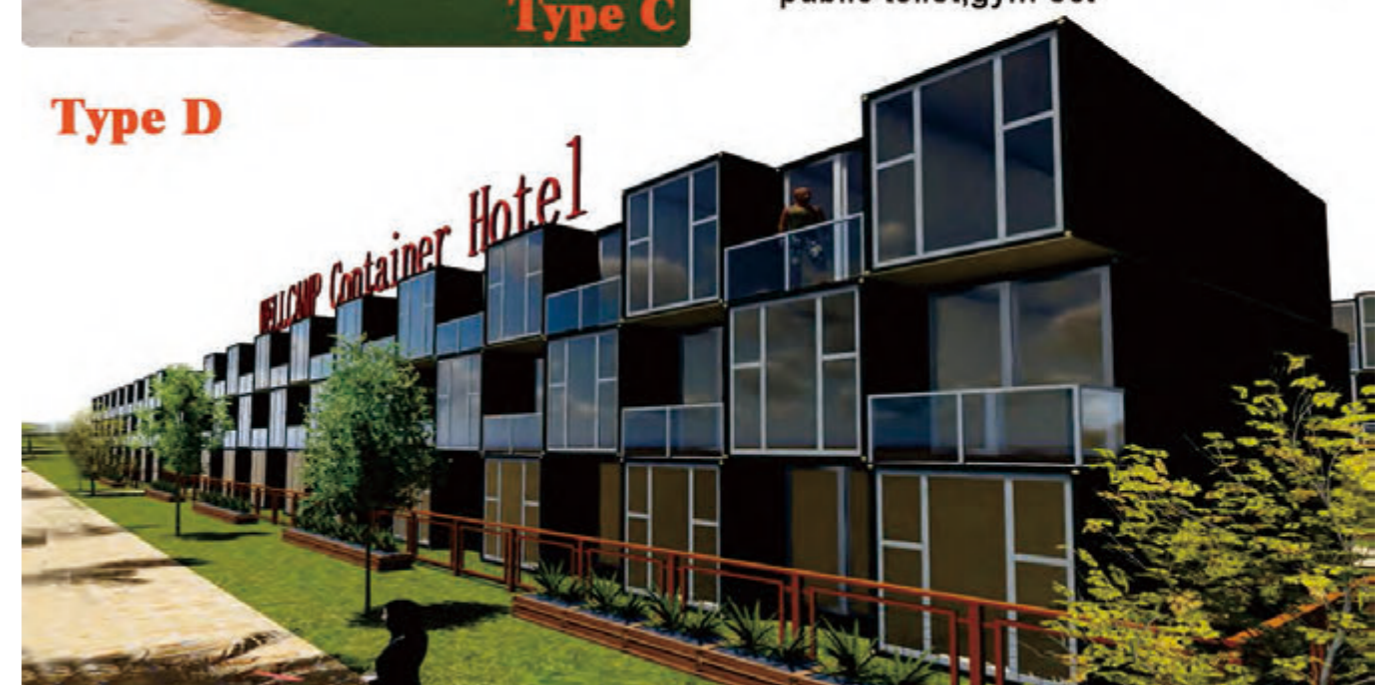
6MX12MX2.8H ( Two bedrooms)

# CONTAINER Hotel

COMBINED BY FLAT PACK CONTAINER HOUSE



Type D



1. Economic design: Type A+Type B  
Luxury design: Type C +Type D

2. Office design: Inside have office, manager room, meeting room, public toilet etc.

3. Accommodation design: Inside have reception room, bedrooms, canteen, public toilet, gym ect

# CONTAINER MALL & CONTAINER SHOP



Made by flat pack container houses



Type A

**Type A**  
Two floor coffee shop 46.5m<sup>2</sup>  
Group floor: expandable design  
First floor: with balcony

**Type B ★★★★★**  
One floor store 14.5m<sup>2</sup>  
Economic shop



Type C

**Type C ★★★★★**  
One floor kitchen shop 14.5m<sup>2</sup>  
Extended awning 14.5m<sup>2</sup>  
Total 29m<sup>2</sup>

**Type D**  
Double expandable container shop  
Inside 14.5m<sup>2</sup>  
Total 32 m<sup>2</sup>



Type B



Type D



Type E

# CONTAINER SCHOOL



Classroom

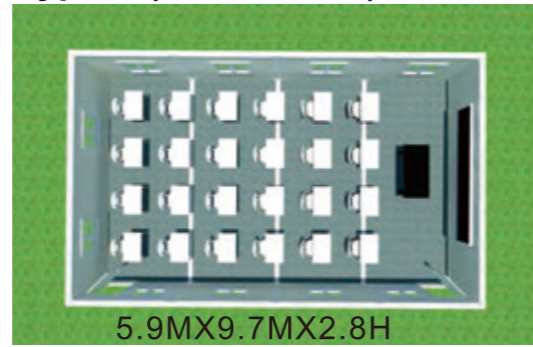


Accommodation



Classroom

Type A (24 students)

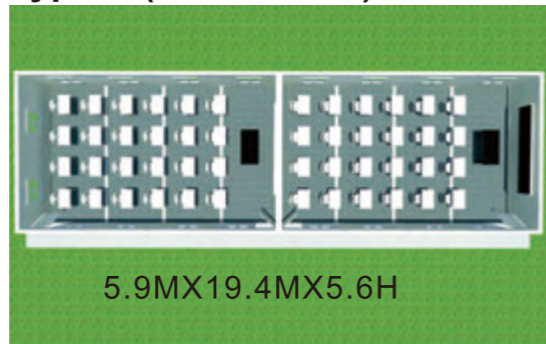


5.9MX9.7MX2.8H



Classroom

Type B (96 students)



5.9MX19.4MX5.6H

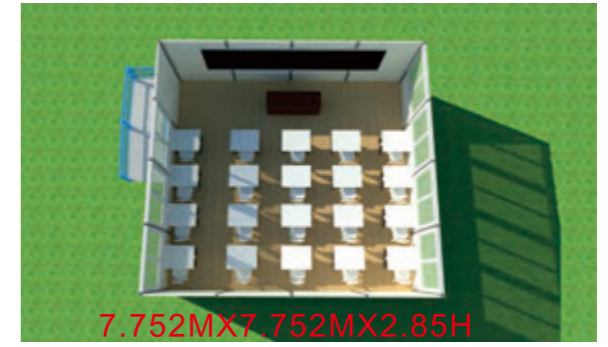
# PREFAB K CLASSROOM



Office



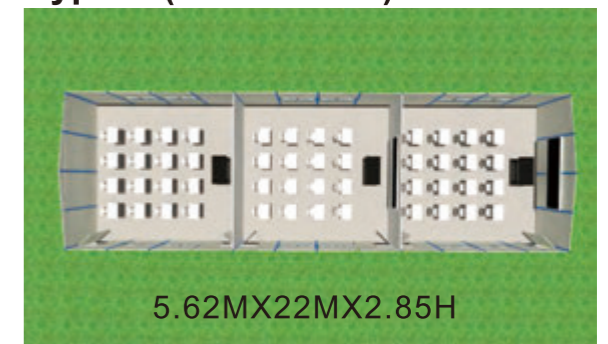
Type C (20 students)



7.752MX7.752MX2.85H



Type D (60 students)



5.62MX22MX2.85H



Accommodation



Meeting room



Toilet



Canteen

# PREFAB LABOR CAMP (K HOUSE)

(This K prefabricated house is widely used in construction sites and labor camp for dormitory, canteen, clinic and laundry room.)



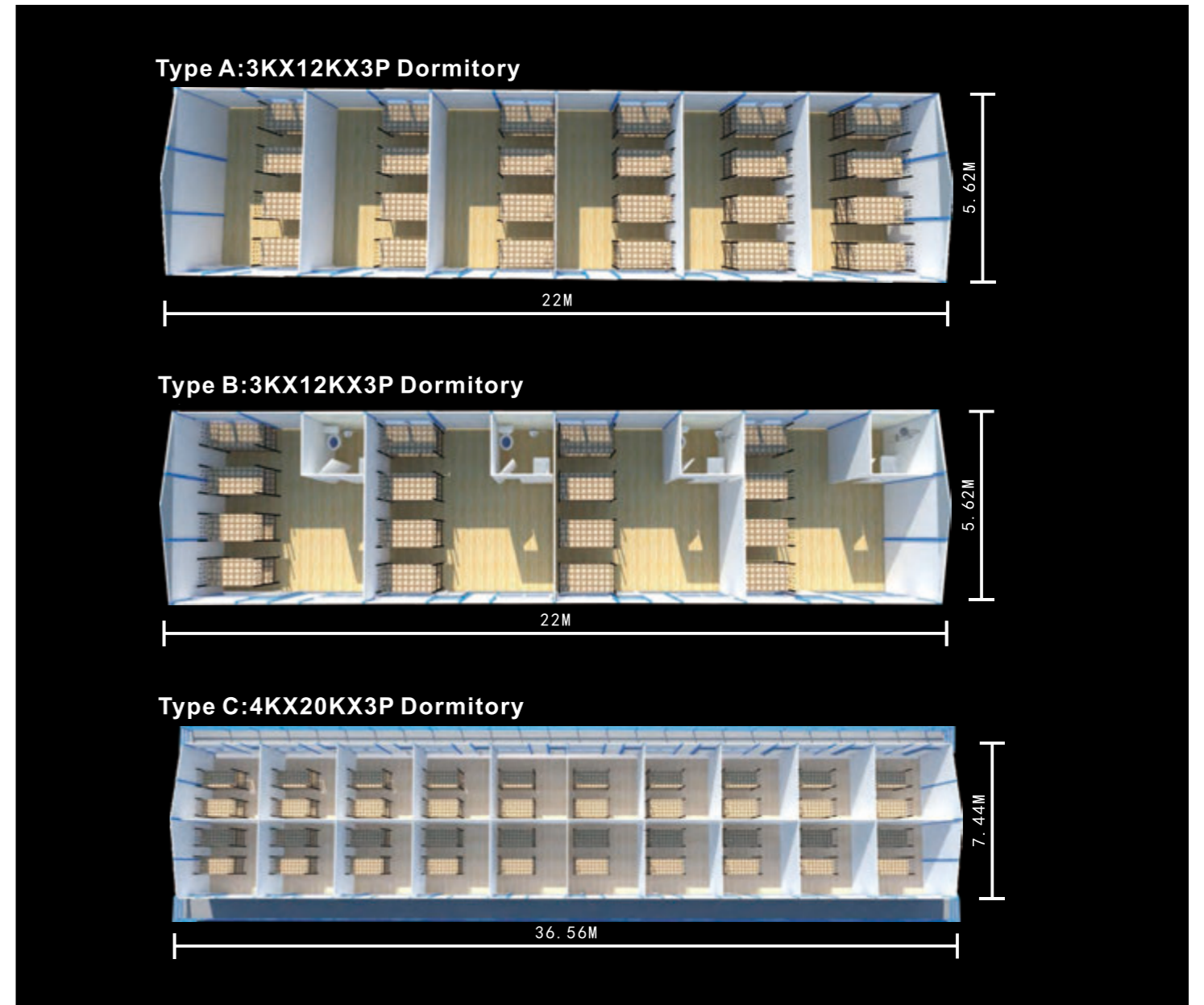
3KX12KX3P Canteen



4KX20KX6P Dormitory

## Features:

- 1."C" section steel for columns and beams.
- 2.50mm EPS/IEPS/Rock wool/ Glass wool/ PU sandwich panel for wall & roof.
- 3.Aluminum sliding windows and sandwich panel doors .
- 4.1x40HQ can load around 280-320 m2.



### The area comparing form of slope style house

K house:1K=1.82m,1 P=0.95m

| Length | Width | ONE FLOOR (3P) |        |        | TWO FLOOR(6P) |        |        | THREE FLOOR(9P) |         |         |
|--------|-------|----------------|--------|--------|---------------|--------|--------|-----------------|---------|---------|
|        |       | 3K             | 4K     | 5K     | 3K            | 4K     | 5K     | 3K              | 4K      | 5K      |
| 4      | K     | 45.53          | 59.07  | 72.61  | 103.79        | 130.87 | 157.95 | 176.04          | 216.66  | 257.28  |
| 5      | K     | 56.67          | 73.52  | 90.38  | 126.97        | 160.68 | 194.39 | 211.27          | 261.83  | 312.39  |
| 6      | K     | 67.81          | 87.98  | 108.14 | 150.16        | 190.49 | 230.82 | 246.51          | 307.01  | 367.50  |
| 7      | K     | 78.95          | 102.43 | 125.90 | 173.35        | 220.30 | 267.26 | 281.74          | 352.18  | 422.61  |
| 8      | K     | 90.09          | 116.88 | 143.67 | 196.53        | 250.11 | 303.69 | 316.98          | 397.35  | 477.72  |
| 9      | K     | 101.22         | 131.33 | 161.43 | 219.72        | 279.93 | 340.13 | 352.21          | 442.52  | 532.83  |
| 10     | K     | 112.36         | 145.78 | 179.19 | 242.91        | 309.74 | 376.57 | 387.45          | 487.70  | 587.94  |
| 11     | K     | 123.50         | 160.23 | 196.96 | 266.09        | 339.55 | 413.00 | 422.68          | 532.87  | 643.05  |
| 12     | K     | 134.64         | 174.68 | 214.72 | 289.28        | 369.36 | 449.44 | 457.92          | 578.04  | 698.16  |
| 13     | K     | 145.78         | 189.13 | 232.48 | 312.47        | 399.17 | 485.88 | 493.16          | 623.21  | 753.27  |
| 14     | K     | 156.92         | 203.58 | 250.25 | 335.65        | 428.98 | 522.31 | 528.39          | 668.38  | 808.38  |
| 15     | K     | 168.06         | 218.03 | 268.01 | 358.84        | 458.79 | 558.75 | 563.63          | 713.56  | 863.49  |
| 16     | K     | 179.19         | 232.48 | 285.77 | 382.03        | 488.61 | 595.19 | 598.86          | 758.73  | 918.60  |
| 17     | K     | 190.33         | 246.93 | 303.54 | 405.21        | 518.42 | 631.62 | 634.10          | 803.90  | 973.71  |
| 18     | K     | 201.47         | 261.38 | 321.30 | 428.40        | 548.23 | 668.06 | 669.33          | 849.07  | 1028.82 |
| 19     | K     | 212.61         | 275.84 | 339.06 | 451.59        | 578.04 | 704.49 | 704.57          | 894.25  | 1083.93 |
| 20     | K     | 223.75         | 290.29 | 356.83 | 474.77        | 607.85 | 740.93 | 739.80          | 939.42  | 1139.04 |
| 21     | K     | 234.89         | 304.74 | 374.59 | 497.96        | 637.66 | 777.37 | 775.04          | 984.59  | 1194.15 |
| 22     | K     | 246.02         | 319.19 | 392.35 | 521.15        | 667.48 | 813.80 | 810.27          | 1029.76 | 1249.26 |

**Explanation:**

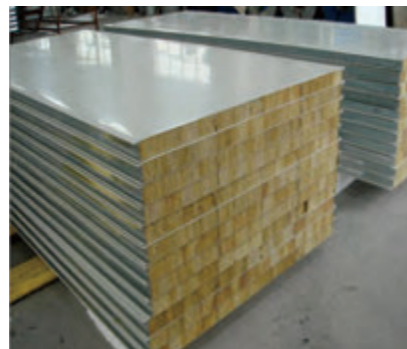
The two floor's house has two pcs stair in standard.Each side of gable wall has one.The stair's area is 4.5m<sup>2</sup>/pc.The three floor stair is 16m<sup>2</sup>/pc.The area will increase or reduce according the stair's quantity.

- The regular of area counting way:**
- 1.The house area:Exterior wall length×exterior wall width×floor number
  - 2.Standard stair:4.5m<sup>2</sup>/pc,corner stair(special for three floors house):16m<sup>2</sup>/pc.
  - 3.Awning area:house shadow area×0.5.
  4. Aisle board area:house shadow area.
  - 5.Total area=①+②+③+④
  - 6.Except the no standard house,this regular is suitable for all the house.
  - 7.Above regular also is fit for the flat style house.

**Features:**



Connection



Wall panel



Roof panel

# ACCESSORIES

### DOOR

Steel
Roller shutter

### KITCHEN CABINET

### FLOOR

Ceramic Tile
PVC Tile

**HOT SALES**

Steel bunk bed

### SANITARY WARE

Wash Basin
Urinal
Squat Toilet
Sitting Toilet
Shower Head
Shower room

### ACCESSORIES

300 Aluminum
600 PVC Gypsum
Lighting tile
Ventilation ball
Switch & Socket

# PREFAB LABOR CAMP ( T HOUSE )

(This T prefabricated house is widely used in construction sites and labor camp for dormitory, canteen, clinic and office.)



## Features:

1. Square tube steel for columns and beams.
2. 50mm EPS/IEPS/Rock wool/ PU sandwich panel for wall & roof.
3. Aluminum sliding windows and sandwich panel and steel doors .
4. Modern design. All the steel structures are hidden inside.



Simple home



Uganda Dormitory



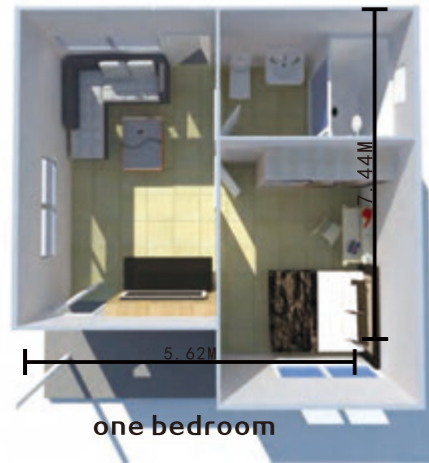


# REFUGEES HOUSING(K HOME)

(Apartment design, have living room, bedroom, bathroom and outside kitchen.  
All the steel can be galvanized, the service time can more than 20 years.)



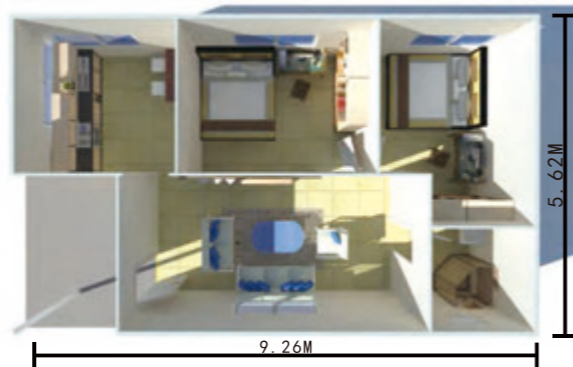
3K×4K×3P (total is 41.8 m<sup>2</sup>)



one bedroom



3K×5K×3P (total area is 52m<sup>2</sup>)



two bedrooms

## Features:

1. Steel structure.
2. 50/75/100mm EPS/IEPS/Rock wool/PU sandwich panel for wall and roof.
3. Aluminum sliding windows and sandwich panel doors.
4. Easy to assemble and disassemble for several times.



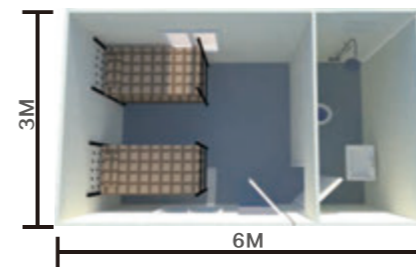
Where Wellcamp is where a dream is

# RELIEF HOUSES(SUDAN HOUSE)

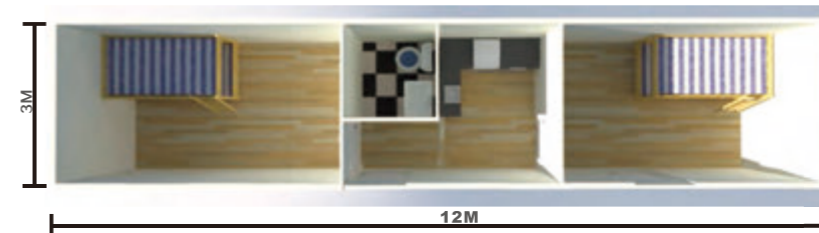
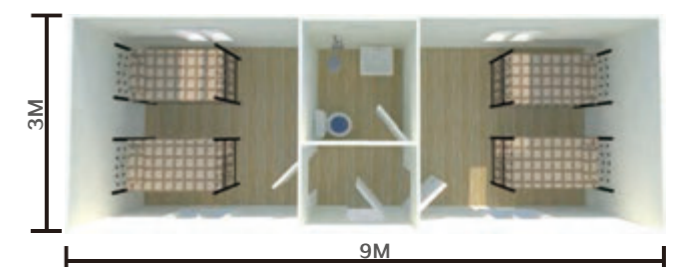
(With steel base and sandwich panel for wall and roof. This kind of house is widely used for refugee houses and labor camp house.)



3M×6M×2.8H  
one bedroom with toilet



3M×9M×2.8H  
two bedrooms with toilet



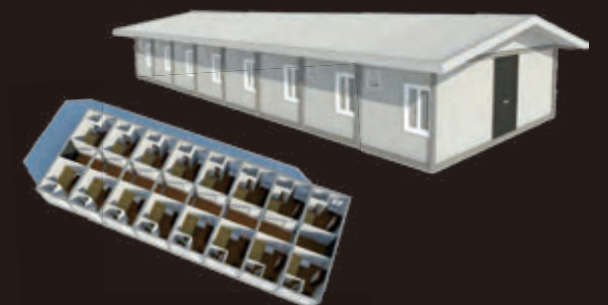
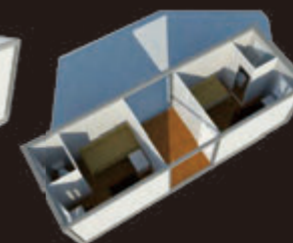
3M×12M×2.8H  
3M×9M×2.8H  
two bedrooms, living room, toilet

## 30FT Container house

Suitable for large-camp project



2.425X9MX2.8H  
3MX9MX2.8H



9MX19.4MX2.8H  
9MX24MX2.8H

# LIGHT STEEL VILLA

(Steel structure, sandwich panel for wall and roof, steel doors and aluminum sliding windows.)



Sandwich panel villa(simple villa)



Sandwich panel villa(simple villa)

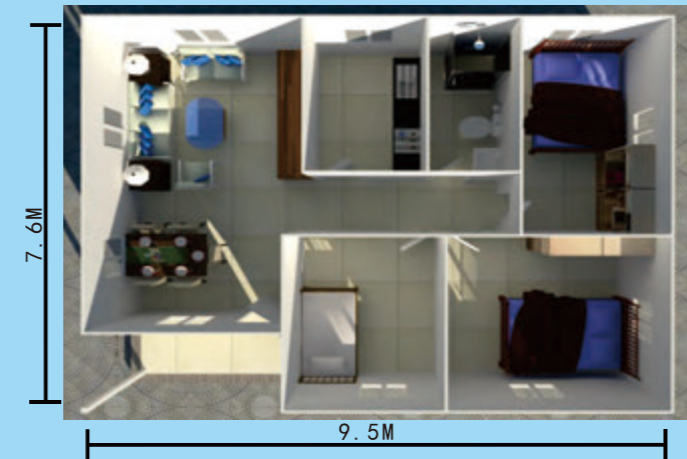


Luxury concrete villa

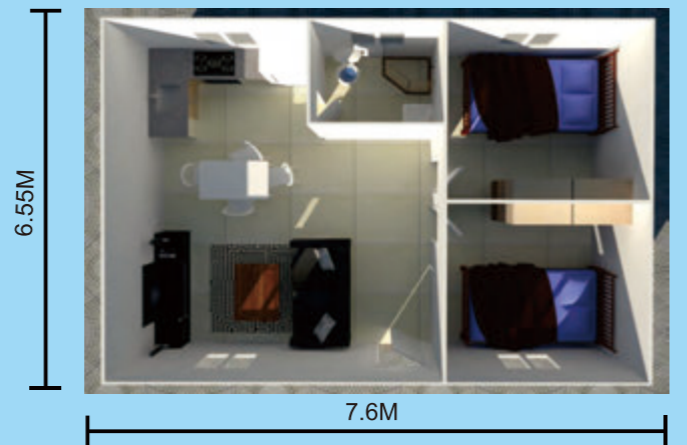
105.59m<sup>2</sup>(3 bedrooms)



72.2m<sup>2</sup>(3 bedrooms)



50.54m<sup>2</sup>(2 bedrooms)



# PORTABLE TOILETS

(These portable toilets are widely used in playgrounds, parks, construction sites& labor camp.)



Type E



Container toilet Inside



Sandwich panel toilet



HDPE toilet



Wellcamp Mitsubishi Project



USA Project



**Features:**

1. "H" section steel for columns and beams.
2. 2.50mm EPS/IEPS/PU sandwich panel or 0.476mm single steel sheet for wall & roof.
3. Aluminum sliding windows and steel sliding door or roller shutter door.
4. With the lighting tiles, ventilation balls, galvanized gutters & water pipes.



# STEEL SHEDS

(These steel sheds warehouse can use the single steel sheet or sandwich panel for roof and wall. Also can do the brick wall in local.)



Qatar warehouse house



cow shed



chicken shed

## Installation:



Steel structure



Foundation 1



Foundation 2



Brickwall & panel



# PROJECTS



Guangzhou Project



New Zealand Project



Sandwich Guard House



Stainless Guard House



Sandwich panel toilet



Malaysia Project



Africa labor camp

# PROJECTS

(Our container houses, prefab houses, steel structures have already sold to 48 countries all over the world.)



Thailand Project



Mauritius labor camp



Kuwait project



Oman labor camp



Saudi Warehouse

Wellcamp, to be NO. 1 brand for prefab labor camp.



India labor camp



Qatar labor camp



Yemen labor camp



Uganda labor camp



Syria refugee housing