



# FASI FORMS OPC

## WONDERBoard

*For Sustainable Construction*

### AN INNOVATIVE GREEN PRODUCT FOR ENGINEERING CONSTRUCTION

A revolutionary engineered plastic panel made from a unique formulation of Polypropylene (PP) and Polyethylene (PE). Designed to address the conventional form-lining with limited reuses and too much construction waste going to the landfill which often not environmentally friendly.

**WONDERBoard** offers unparalleled durability, cost-effectiveness, and environmental sustainability. This cutting-edge formwork panel is set to replace traditional form-lining and face-sheet materials like steel, aluminium, and phenolic plywood, offering a superior alternative that meets the industry's evolving needs.



# WHY WONDERBoard

For Sustainable Construction



Engineered plastic panels offer numerous benefits to the construction industry and support corporate social responsibility by fostering a greener environment for sustainable development.



EASY MAINTENANCE



WATERPROOF



HIGH IMPACT STRENGTH



DIMENSIONAL STABILITY



100% PVC FREE



CIRCULAR ECONOMY MODEL



REUSABLE OVER 200 TIMES



EASY INSTALLATION



REPAIRABLE



LIGHTWEIGHT

## SIZES AND SPECIFICATIONS

Length	Width	Weight	Thickness
1200mm	1200mm	14.30kg	10mm
1800mm	1200mm	21.50kg	10mm
2400mm	1200mm	28.70kg	10mm

**Note:** A tolerance of  $\pm 5\%$  allowed for all specified materials, Custom sizes available upon request, with width up to **1500mm** and thicknesses up to **30mm**. Common thickness are **10mm, 12mm, 13mm, 17mm & 18mm**

## DISADVANTAGES OF PLYWOOD FORMWORK

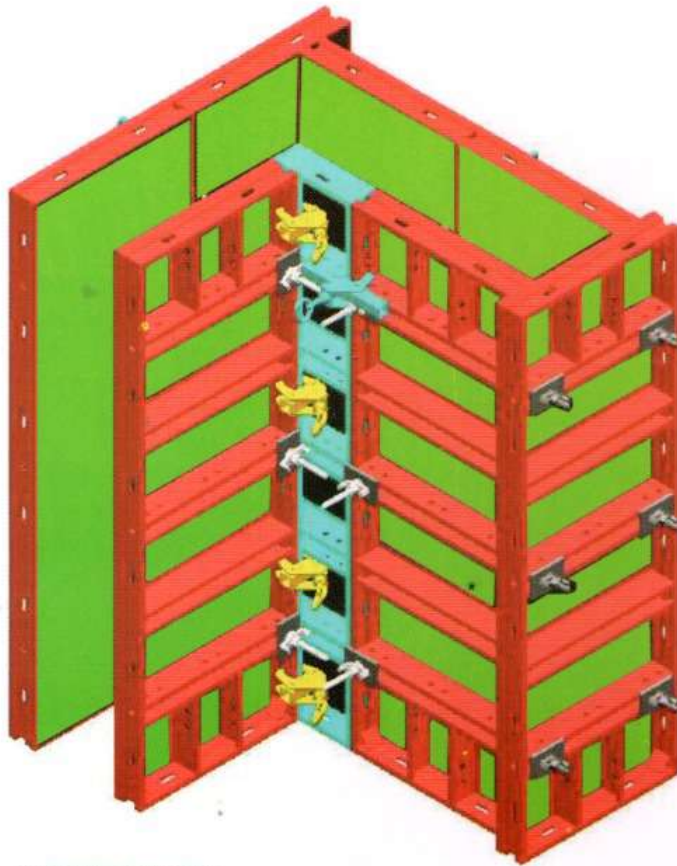
**Number of Reuses**  
Limited reuses (usually 4-5 times) depending on quality.

**Moisture Swelling**  
Delaminated & damaged under weathering

**Concrete Finishing**  
Concrete often stick with plywood surface, creating rough surface finish.

# WONDERBoard VERSATILITY IN FORMWORK APPLICATIONS

Wonderboard is a highly adaptable product specifically used in various formwork applications. Formwork refers to temporary or permanent moulds used to shape concrete or other materials while they set.



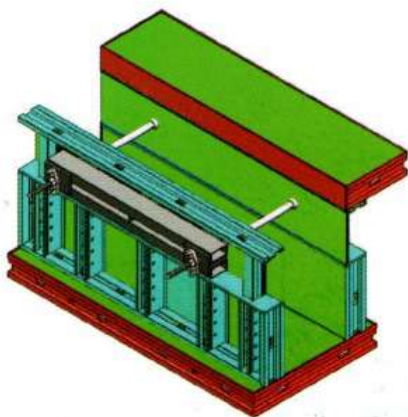
2 DIRECTION WALL FORMWORK



COLUMN FORMWORK



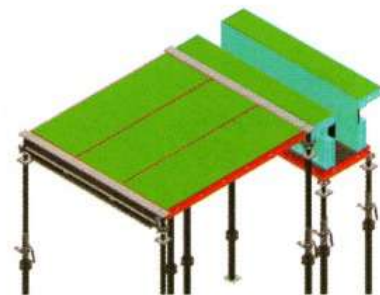
MULTIPLE DIRECTION WALL



BEAM FORMWORK



SLAB & WALL FORMWORK



SLAB & BEAM FORMWORK



WONDERBOARD IN WALL & COLUMN APPLICATION



WONDERBOARD IN SLAB APPLICATION



**FASI FORMS OPC**

**PHONE**

Manila Office:  
+(632)-8519-9901

**EMAIL**

info@fasiformsystem.com

www.fasiformsystem.com

**ADDRESS**

PLYTEC Polymer Sdn Bhd  
No. 19, Jln Meranti Permai 3,  
Meranti Permai Industrial Park,  
Batu 15, Jln Puchong, 47100,  
Puchong, Selangor, Malaysia

**FASI FORMS OPC**

4722 Imus St., Barangay Olympia,  
Makati City, 1207, Philippines