



CONTAINER OFFICE
CONTAINER VILLA/HOTEL



CONTAINER HOUSE
STEEL STRUCTURE
PREFAB LABOR CAMP

Unit 301, 3rd Floor, MIIM Building, 1345 Angono St. Barangay Poblacion, Makati City 1210, Philippines



FORMING ACCESS AND SUPPORT, INC.

Address: Unit 301, 3rd Floor, MIIM Building, 1345 Angono St. Barangay Poblacion, Makati City 1210, Philippines

Contact: Jose Cruz

Mobile: +63 917 318 6190

Tel. No.: +632 8519 9901

Email: info@fasiformsystem.com

Website: www.fasiformsystem.com

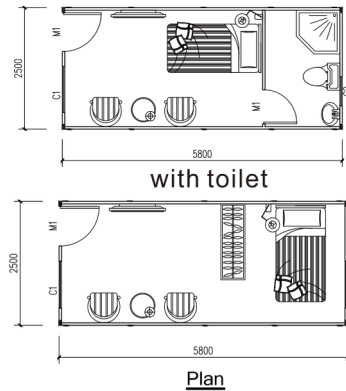
FOLDING CONTAINER HOUSE (CAMP)



Size:2.5MX5.8MX2.6H

Features:

1. 4 minutes can install 1 house.
2. Galvanized steel structure.
3. 40mm fireproof IEPS sandwich panel for wall & 100mm glass wool for roof.
4. Aluminum sliding windows with security bar.
5. Fireproof IEPS sandwich panel door.
6. 18mm MGO board for floor.
6. When is folded, the height is only 350mm.



REFUGEES HOUSING

Fast Build

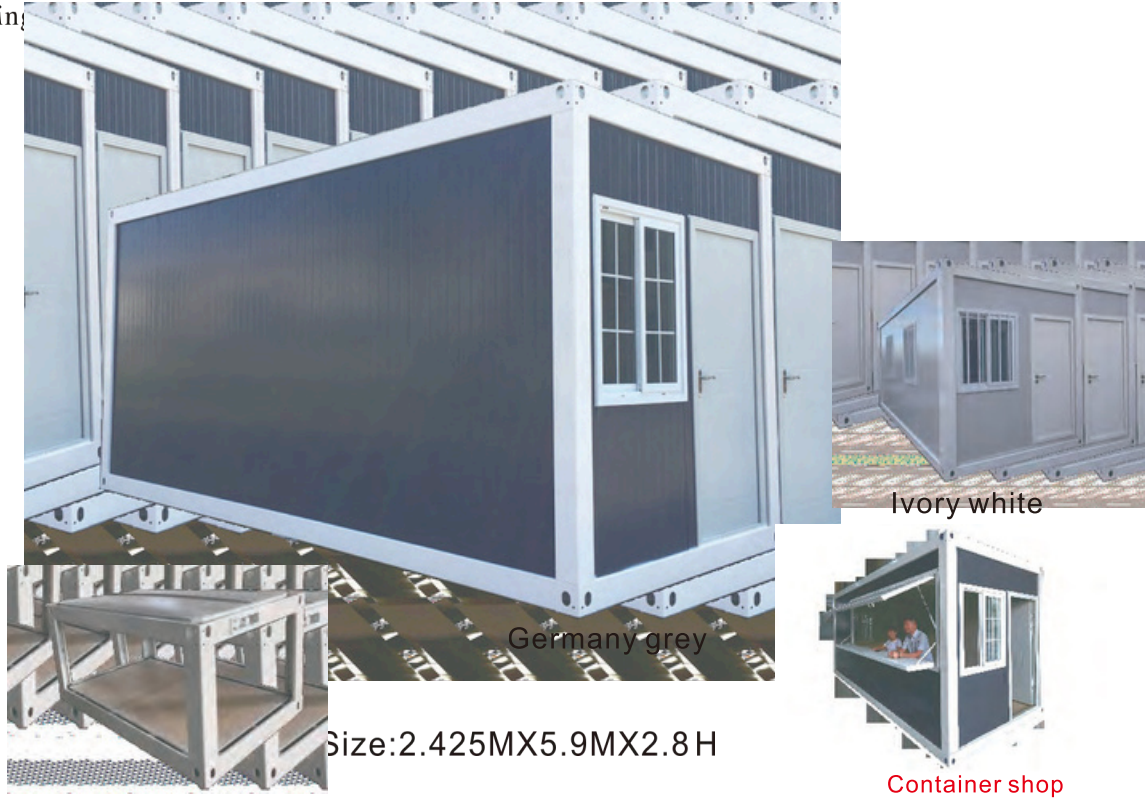


Projects:



FLAT PACK CONTAINER HOUSE

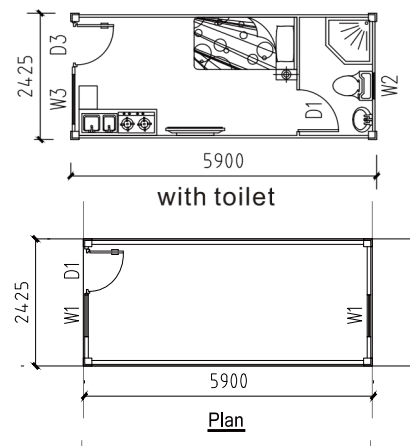
(This flat pack container house is popular used for office, dormitory & shop.
Loading



Size: 2.425MX5.9MX2.8H

Features:

1. Come with completed roof & floor.
2. Electric wires run over ceiling, including DB, breaker, power inlet & sockets.
3. Fully Galvanized Steel Structure.
4. 50MM IEPS sandwich panel for wall & 100mm glass wool for roof.
5. Steel door & UPVC double glass windows with security bar.
6. PVC modern indoor lining.



Installation:



— Typical Projects —

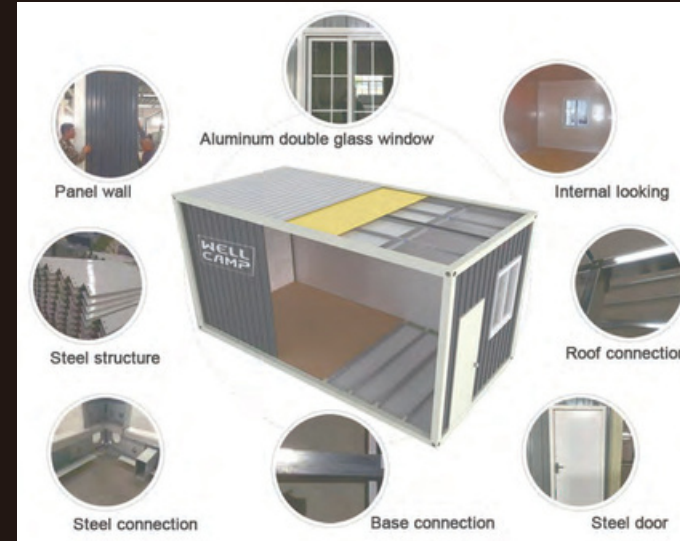
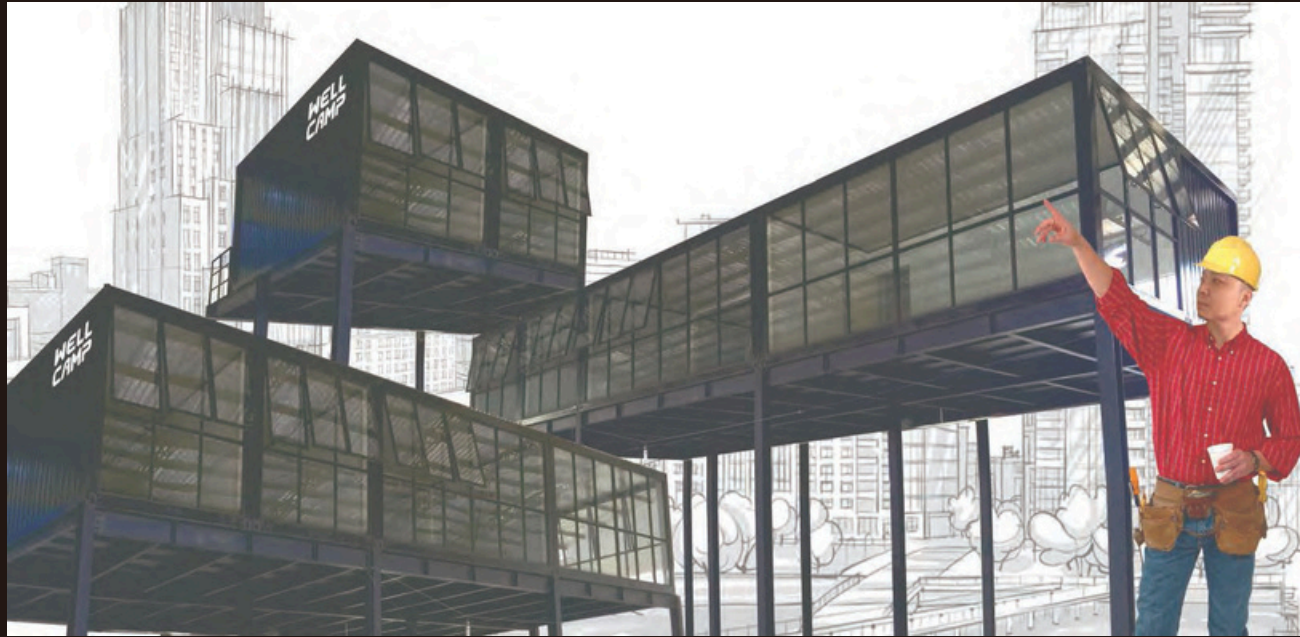


- Container villa
- Container dormitory
- Container office
- Container hotel



DETACHABLE CONTAINER HOUSE

(This container house is widely used for office, apartment & shop.
Loading: 1x40HQ can load 13 units.)



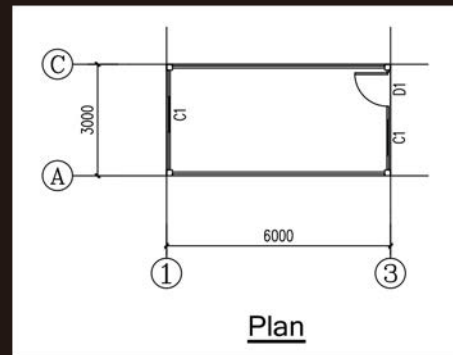
Features:

1. Galvanized steel structure.
2. 50mm fireproof IEPS/EPS/Glass wool sandwich panel for wall.
3. 0.476mm steel sheet+100mm glass wool+ steel sheet ceiling for roof.
3. Double glass aluminum sliding windows.
4. Steel door.
5. 18mm MGO board for floor.
6. Optional design. Outside with corrugated shape&inside with wooden coating.

Projects:



- 1. Separate steel structure.
- 2. Can load in 20ft container.
- 3. Customized size.
- 4. No need crane to install.



3MX6MX2.8H

SHIPPING CONTAINER HOUSE

(This shipping container house is popular used for villa resort , hotel, office, accommodations & shops.)

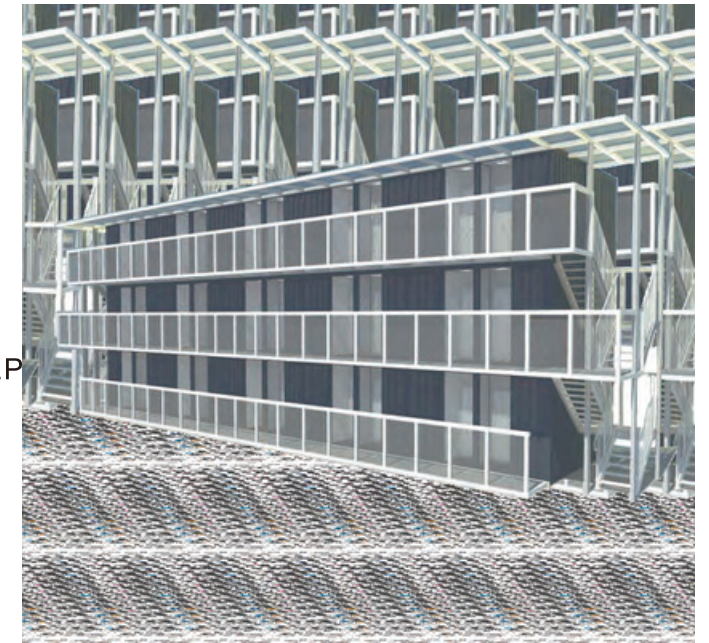


Size:2.438MX6.058MX2.896H

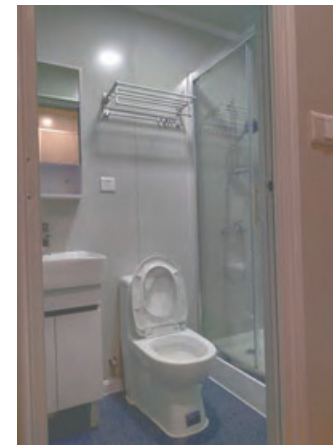


Features:

1. Structure: 20' HQ Shipping Container.
2. Flooring: 28mm Plywood + 3mm PVC Vinyl / WPC panel.
3. Ceiling: Corrugated steel sheet + 50mm AEPS sandwich panel + WPC ceiling.
4. Wall: Corrugated steel sheet + 50mm AEPS/IEP sandwich panel.
5. Door: AEPS sandwich panel doors (With Smart card)+ Glass doors.
6. Balustrade: Square tube + Glass.



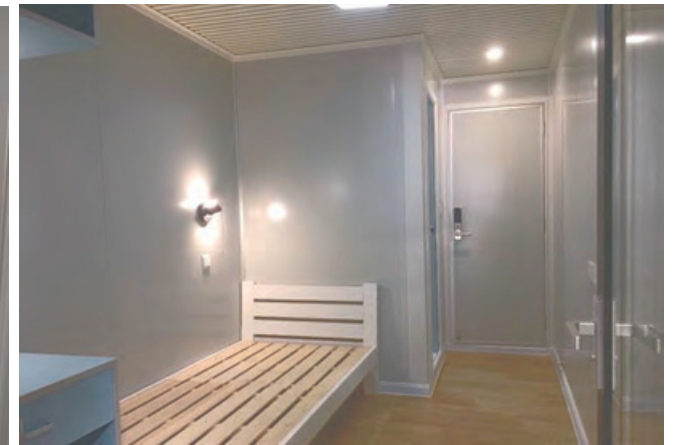
Inside:



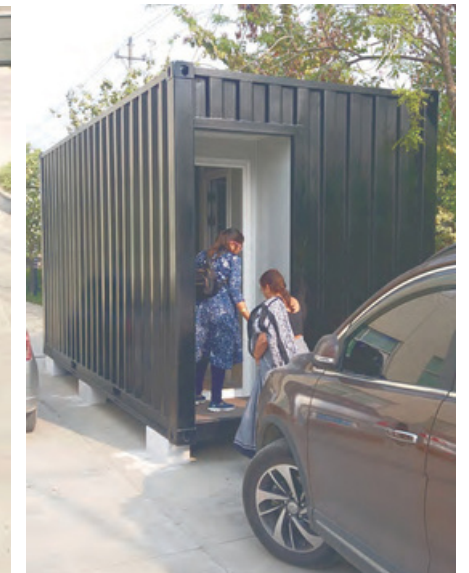
Toilet



Bedroom

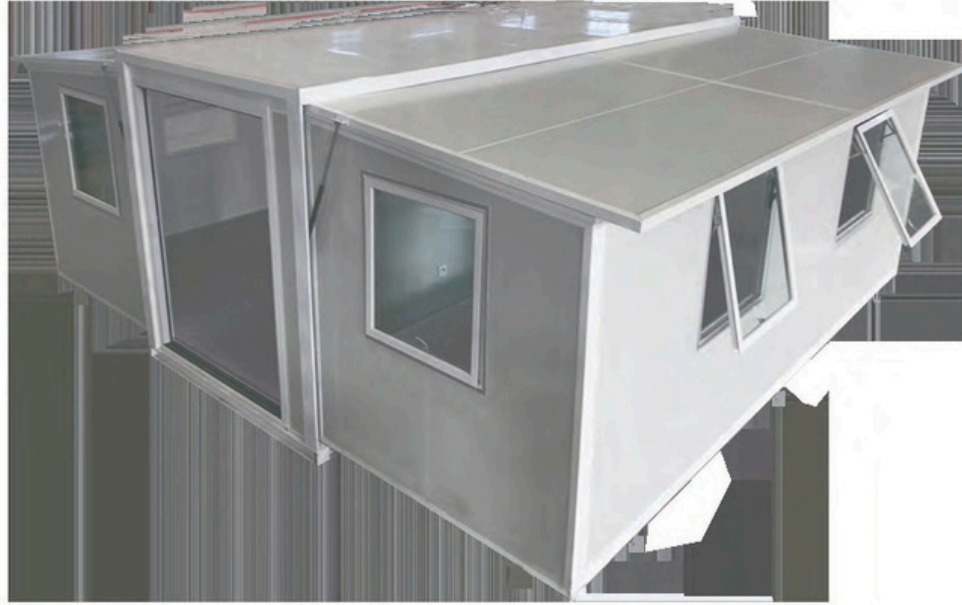


Transportation:

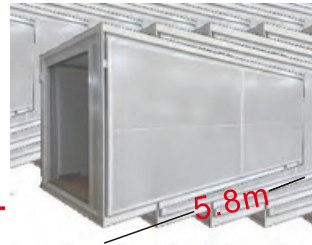


EXPANDABLE CONTAINER HOUSE

(This expandable container house is widely used in Emergency Function, Disaster Relief, Remote Site Deployment, Field Clinic, Site Offices etc.)



6 People install 1 house within 3 hours



20FT

Features:

1. Floor: Steel structure+Plywood +PVC vinyl flooring.
2. Wall: 50mm EPS sandwich panel.
3. Roof: Fiberglass sandwich panel.
4. Window: Aluminum casement windows.
5. Door: Sandwich panel doors or aluminum sliding door..



40FT expandable container



5 steps 3 hours a home

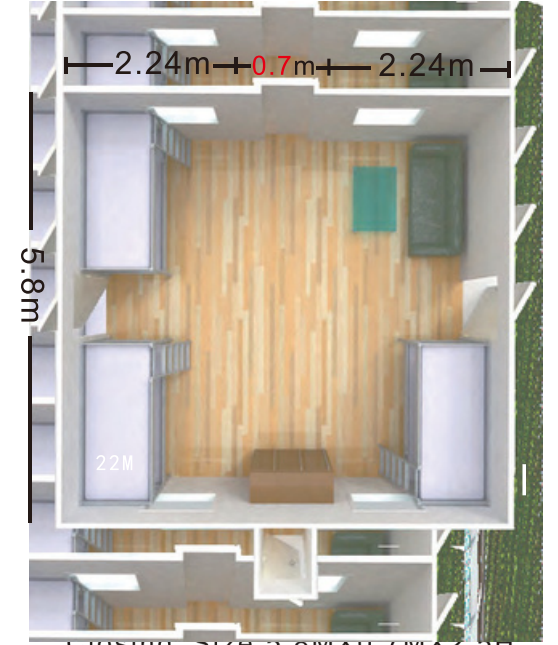
Plans:



Type A 38m2 (2 sets/40HQ)



Opening Size:5.8MX6.68MX2.5H
Closing Size:5.8MX2.2MX2.5H



Closing Size:5.8MX0.7MX2.5H

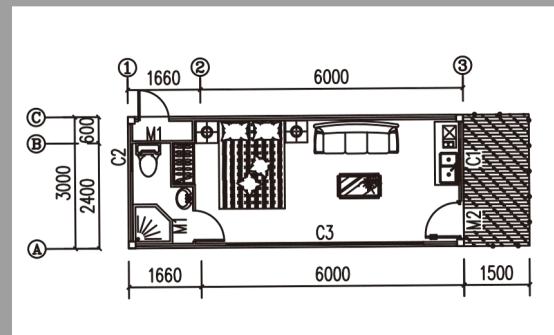
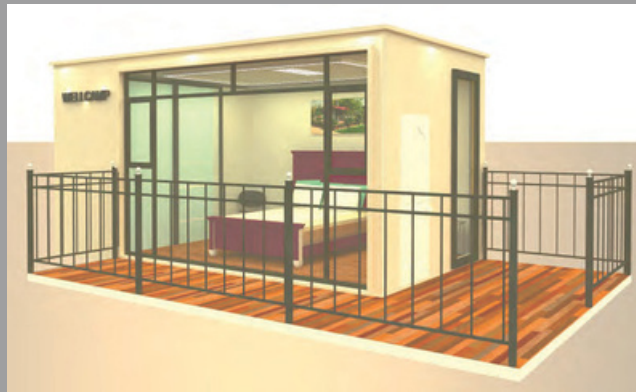


Inside decoration

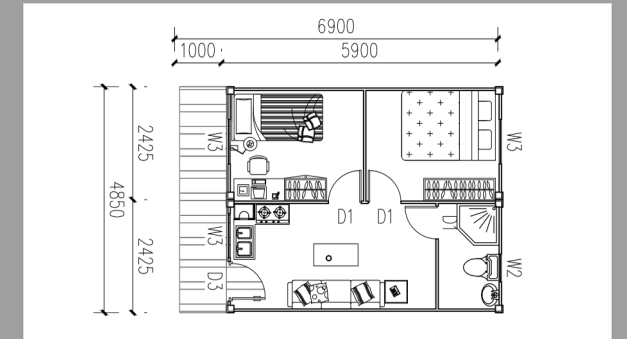




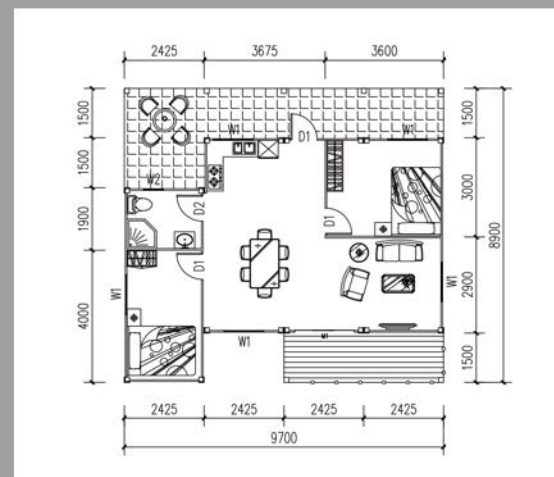
Living room, bedrooms, toilet, kitchen



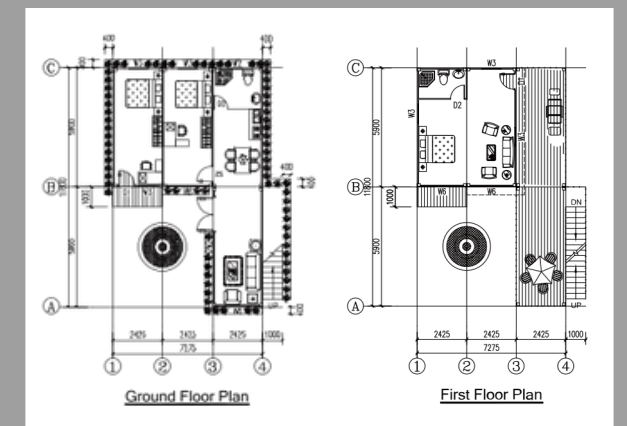
Type A: 3MX7.66MX2.8H



Type C: 4.85MX6.9MX2.8H



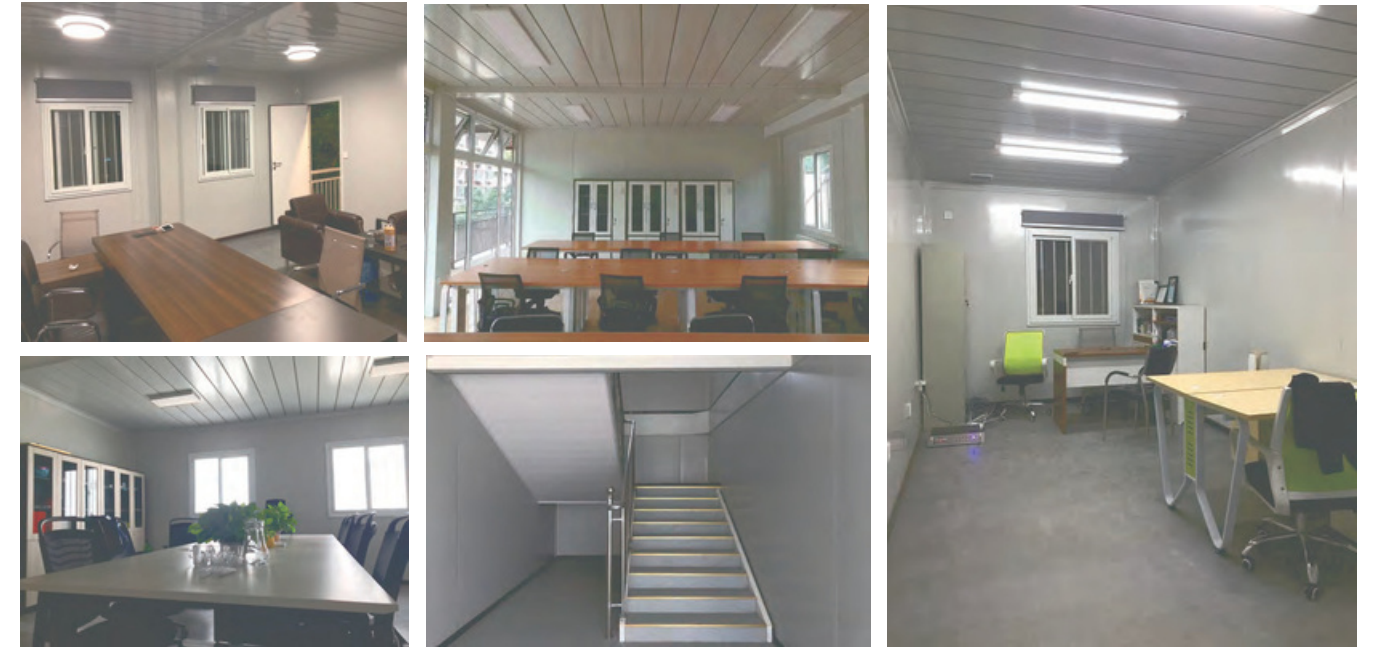
Type B: 8.9MX9.7MX2.8H



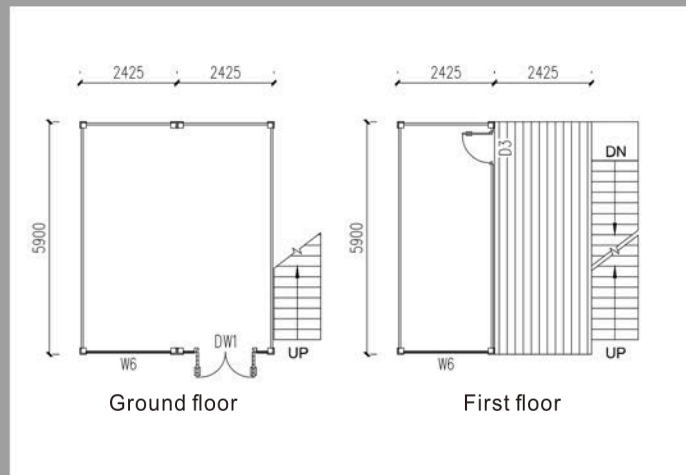
Type D: 7.275MX11.8MX5.6H



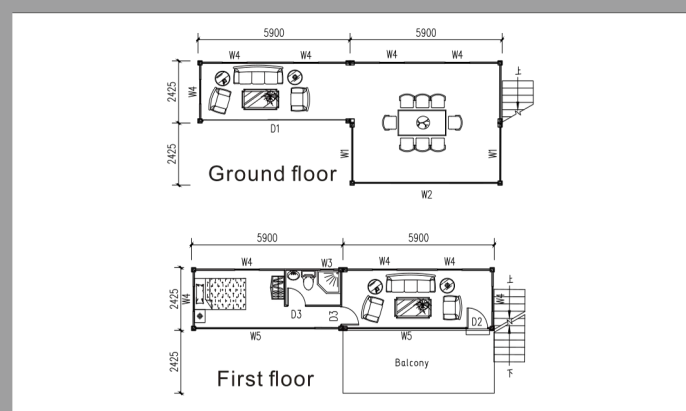
CONTAINER OFFICE



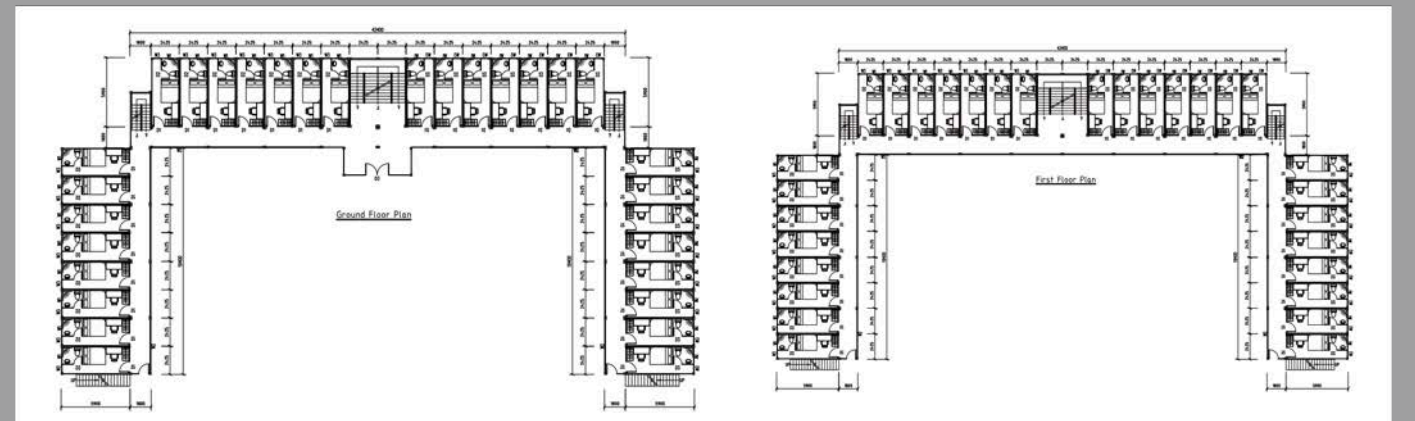
Manager room, office, reception room, meeting room, toilet



Type A: 4.85MX5.9MX5.6H



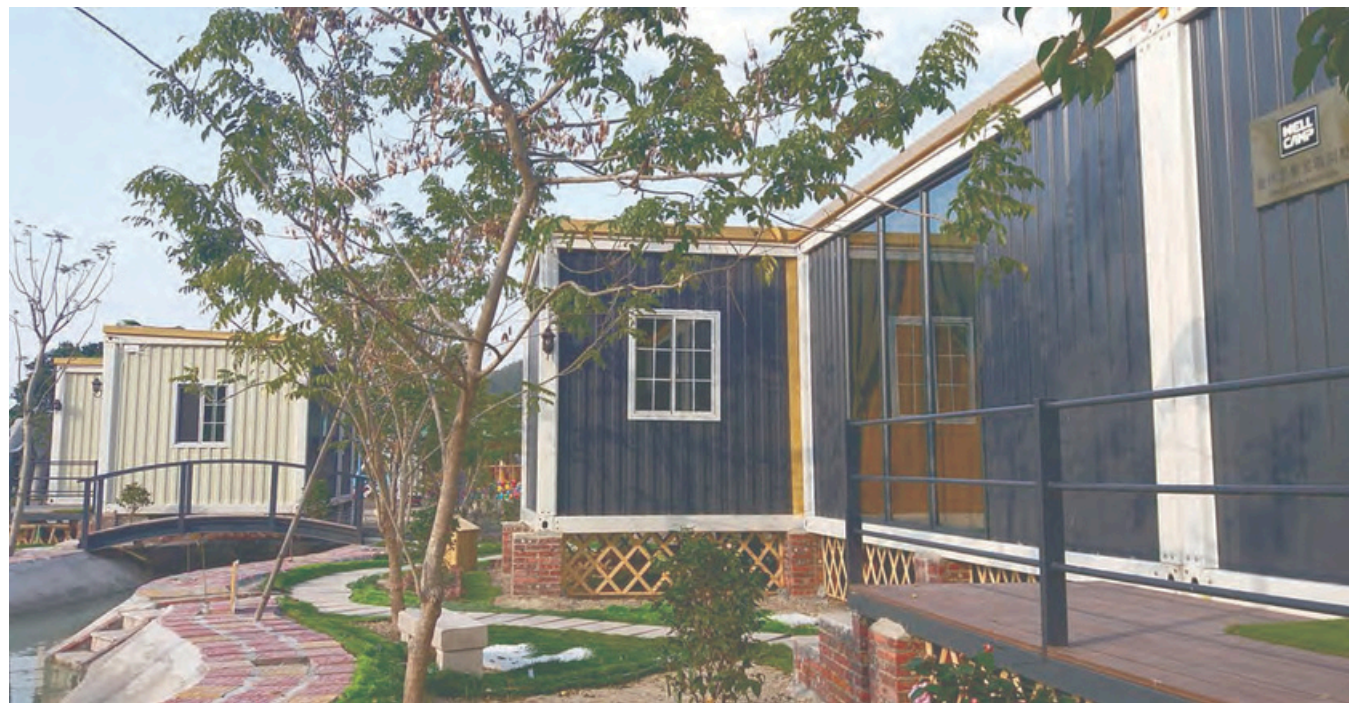
Type B: 4.85MX11.8MX5.6H



Type C: 7.7MX42.4MX8.4H

CONTAINER VILLA

(This container villa resort is made by the Detachable container house.)



6MX15MX2.8H (Three bedrooms)



6MX12MX2.8H (Two bedrooms)

CONTAINER Hotel

COMBINED BY FLAT PACK CONTAINER HOUSE



Type A

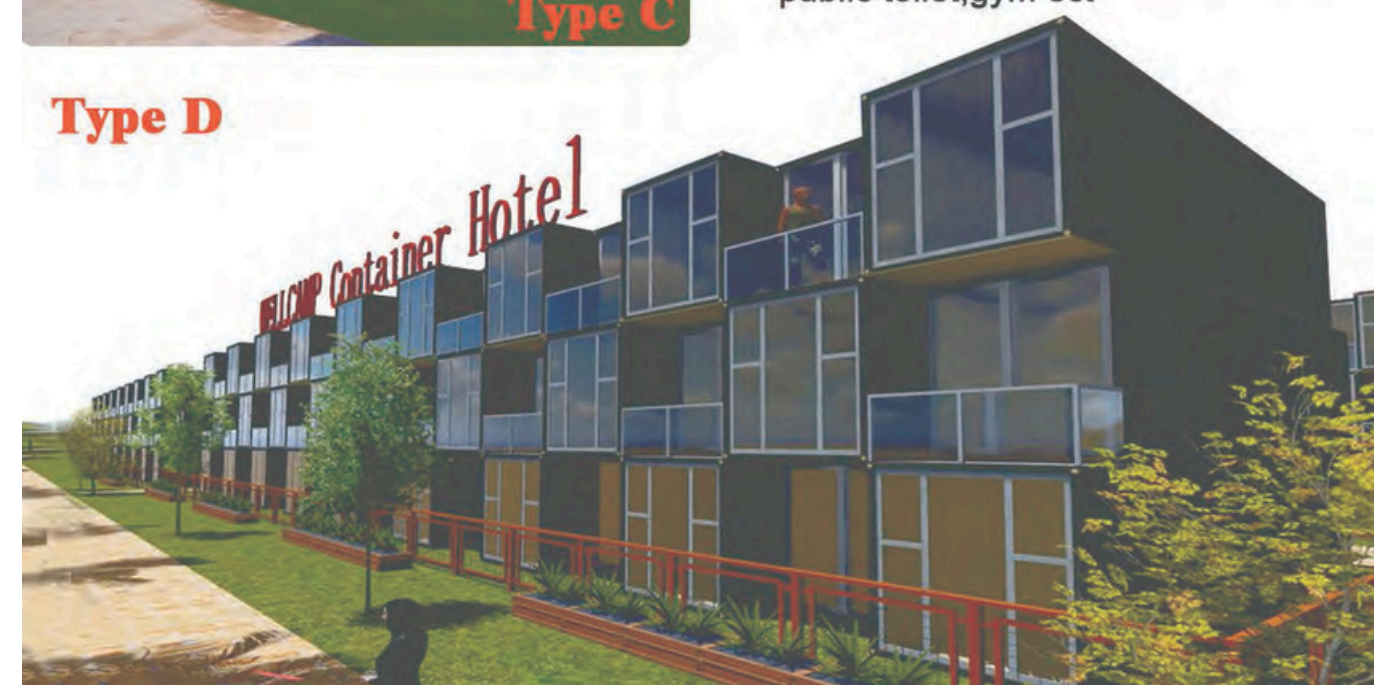


Type B



Type C

Type D



1. Economic design: Type A+Type B
Luxury design: Type C +Type D

2. Office design: Inside have office, manager room, meeting room, public toilet etc.

3. Accommodation design: Inside have reception room, bedrooms, canteen, public toilet, gym ect

CONTAINER MALL & CONTAINER SHOP



Made by flat pack container houses



Type A
 Two floor coffee shop 46.5m²
 Group floor: expandable design
 First floor: with balcony

Type B ★★★★★
 One floor store 14.5m²
 Economic shop



Type C ★★★★★
 One floor kitchen shop 14.5m²
 Extended awning 14.5m²
 Total 29m²

Type D
 Double expandable container shop
 Inside 14.5m²
 Total 32 m²



CONTAINER SCHOOL



Classroom

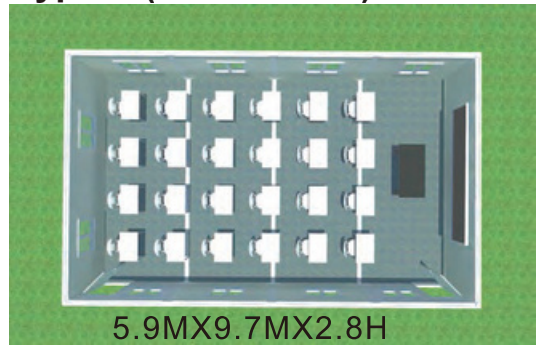


Accommodation



Classroom

Type A (24 students)

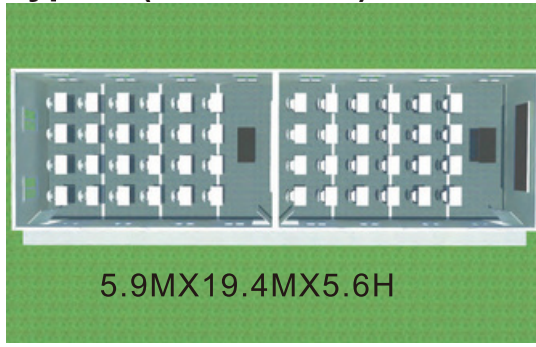


5.9MX9.7MX2.8H



Classroom

Type B (96 students)



5.9MX19.4MX5.6H

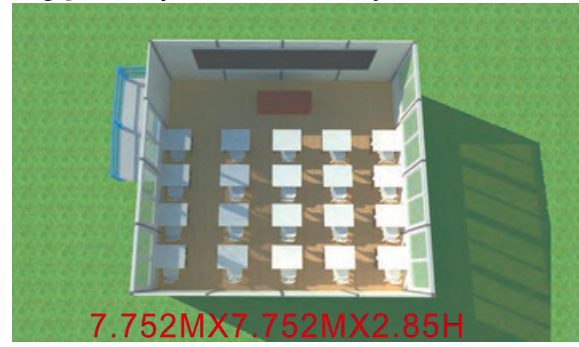
PREFAB K CLASSROOM



Office



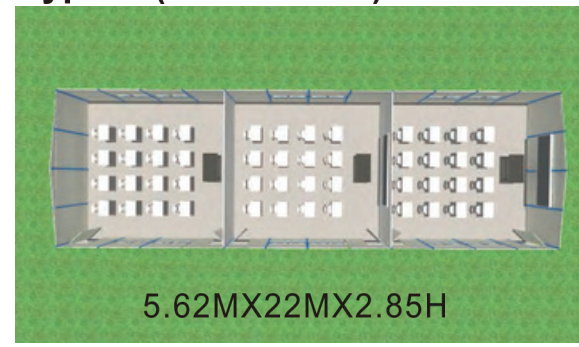
Type C (20 students)



7.752MX7.752MX2.85H



Type D (60 students)



5.62MX22MX2.85H



Accommodation



Meeting room



Toilet



Canteen

PREFAB LABOR CAMP (K HOUSE)

(This K prefabricated house is widely used in construction sites and labor camp for dormitory, canteen, clinic and laundry room.)



3KX12KX3P Canteen

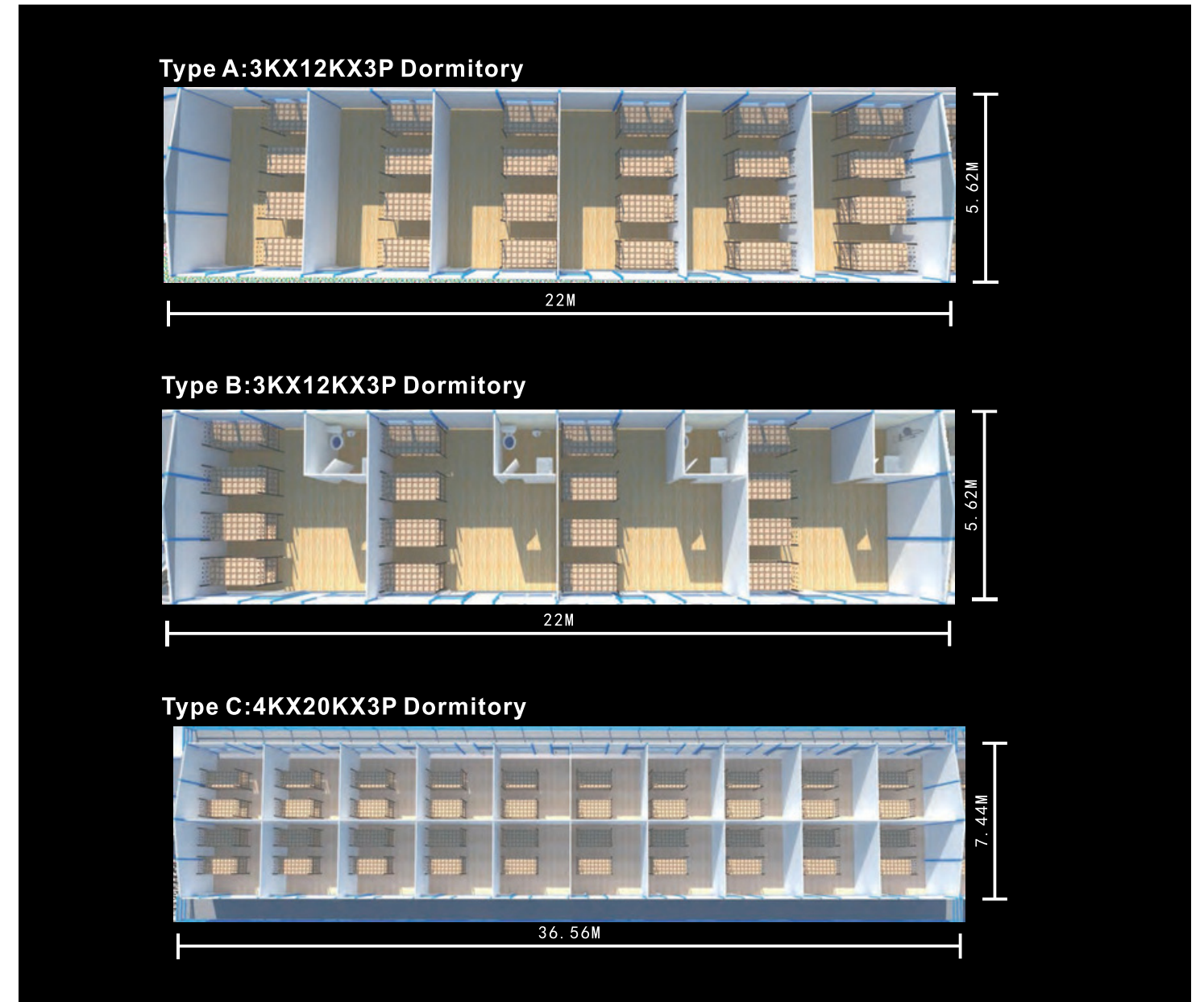


4KX20KX6P Dormitory



Features:

1. "C" section steel for columns and beams.
2. 50mm EPS/IEPS/Rock wool/ Glass wool/ PU sandwich panel for wall & roof.
3. Aluminum sliding windows and sandwich panel doors.
4. 1x40HQ can load around 280-320 m2.



K labor camp with steel base

The area comparing form of slope style house

K house:1K=1.82m,1 P=0.95m

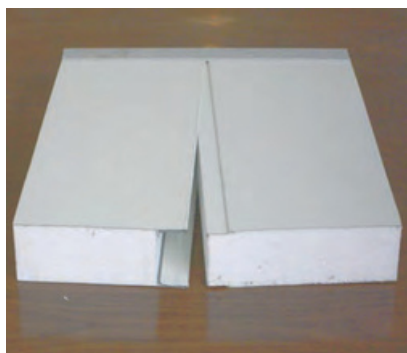
Length	Width	ONE FLOOR (3P)			TWO FLOOR(6P)			THREE FLOOR(9P)		
		3K	4K	5K	3K	4K	5K	3K	4K	5K
4	K	45.53	59.07	72.61	103.79	130.87	157.95	176.04	216.66	257.28
5	K	56.67	73.52	90.38	126.97	160.68	194.39	211.27	261.83	312.39
6	K	67.81	87.98	108.14	150.16	190.49	230.82	246.51	307.01	367.50
7	K	78.95	102.43	125.90	173.35	220.30	267.26	281.74	352.18	422.61
8	K	90.09	116.88	143.67	196.53	250.11	303.69	316.98	397.35	477.72
9	K	101.22	131.33	161.43	219.72	279.93	340.13	352.21	442.52	532.83
10	K	112.36	145.78	179.19	242.91	309.74	376.57	387.45	487.70	587.94
11	K	123.50	160.23	196.96	266.09	339.55	413.00	422.68	532.87	643.05
12	K	134.64	174.68	214.72	289.28	369.36	449.44	457.92	578.04	698.16
13	K	145.78	189.13	232.48	312.47	399.17	485.88	493.16	623.21	753.27
14	K	156.92	203.58	250.25	335.65	428.98	522.31	528.39	668.38	808.38
15	K	168.06	218.03	268.01	358.84	458.79	558.75	563.63	713.56	863.49
16	K	179.19	232.48	285.77	382.03	488.61	595.19	598.86	758.73	918.60
17	K	190.33	246.93	303.54	405.21	518.42	631.62	634.10	803.90	973.71
18	K	201.47	261.38	321.30	428.40	548.23	668.06	669.33	849.07	1028.82
19	K	212.61	275.84	339.06	451.59	578.04	704.49	704.57	894.25	1083.93
20	K	223.75	290.29	356.83	474.77	607.85	740.93	739.80	939.42	1139.04
21	K	234.89	304.74	374.59	497.96	637.66	777.37	775.04	984.59	1194.15
22	K	246.02	319.19	392.35	521.15	667.48	813.80	810.27	1029.76	1249.26

Explanation:

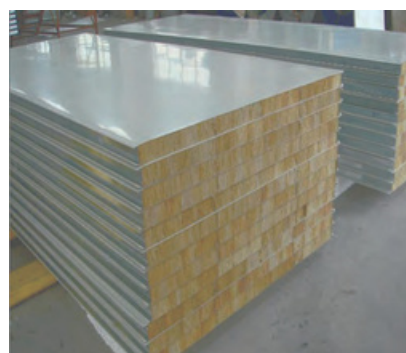
The two floor's house has two pcs stair in standard.Each side of gable wall has one.The stair's area is 4.5m²/pc.The three floor stair is 16m²/pc.The area will increase or reduce according the stair's quantity.

- The regular of area counting way:
- 1.The house area:Exterior wall length×exterior wall width×floor number
 - 2.Standard stair:4.5m²/pc,corner stair(special for three floors house):16m²/pc.
 - 3.Awning area:house shadow area×0.5.
 4. Aisle board area:house shadow area.
 - 5.Total area=①+②+③+④
 - 6.Except the no standard house,this regular is suitable for all the house.
 - 7.Above regular also is fit for the flat style house.

Features:



Connection



Wall panel



Roof panel

ACCESSORIES

DOOR

Steel Roller shutter

KITCHEN CABINET

FLOOR

Ceramic Tile PVC Tile

Steel bunk bed

SANITARY WARE

Wash Basin Urinal Squat Toilet Sitting Toilet Shower Head Shower room

ACCESSORIES

300 Aluminum 600 PVC Gypsum Lighting tile Ventilation ball Switch & Socket

PREFAB LABOR CAMP (T HOUSE)

(This T prefabricated house is widely used in construction sites and labor camp for dormitory, canteen, clinic and office.)



Features:

1. Square tube steel for columns and beams.
2. 50mm EPS/IEPS/Rock wool/ PU sandwich panel for wall & roof.
3. Aluminum sliding windows and sandwich panel and steel doors .
4. Modern design. All the steel structures are hidden inside.



Simple home



Uganda Dormitory

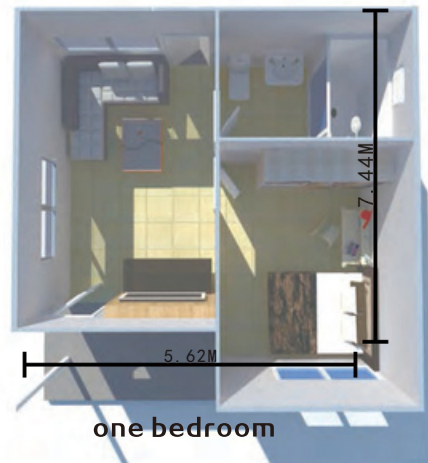


REFUGEES HOUSING(K HOME)

(Apartment design, have living room, bedroom, bathroom and outside kitchen.
All the steel can be galvanized, the service time can more than 20 years.)



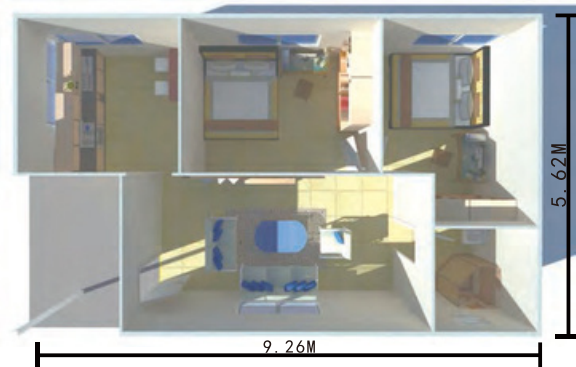
3K×4K×3P (total is 41.8 m²)



one bedroom



3K×5K×3P (total area is 52m²)



two bedrooms

Features:

- 1.Steel structure.
- 2.50/75/100mm EPS/IEPS/Rock wool/PU sandwich panel for wall and roof.
- 3.Aluminum sliding windows and sandwich panel doors.
- 4.Easy to assemble and disassemble for several times.

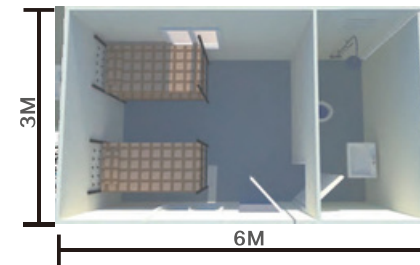


RELIEF HOUSES(SUDAN HOUSE)

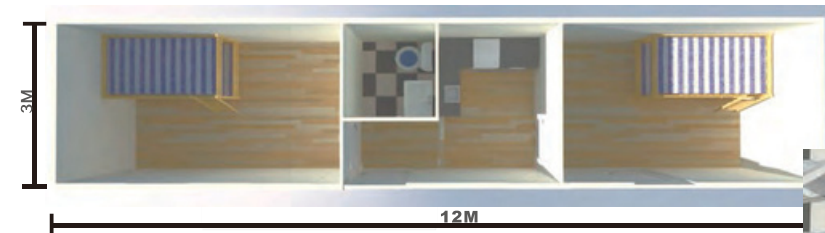
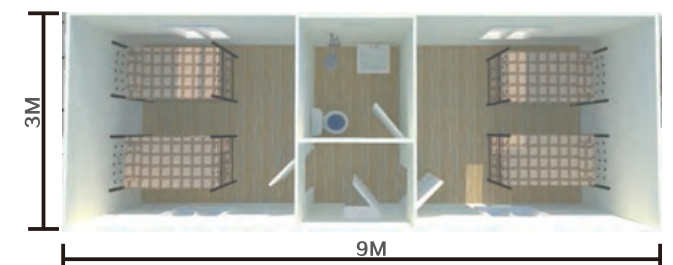
(With steel base and sandwich panel for wall and roof. This kind of house is widely used for refugee houses and labor camp house.)



3M×6M×2.8H
one bedroom with toilet



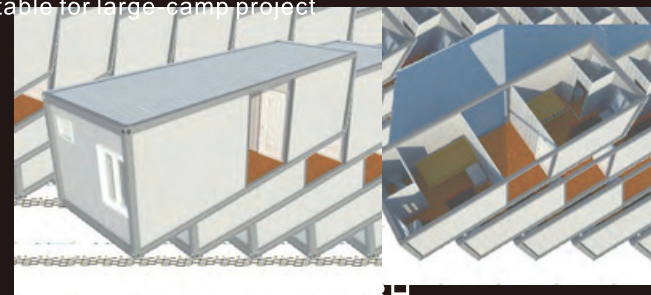
3M×9M×2.8H
two bedrooms with toilet



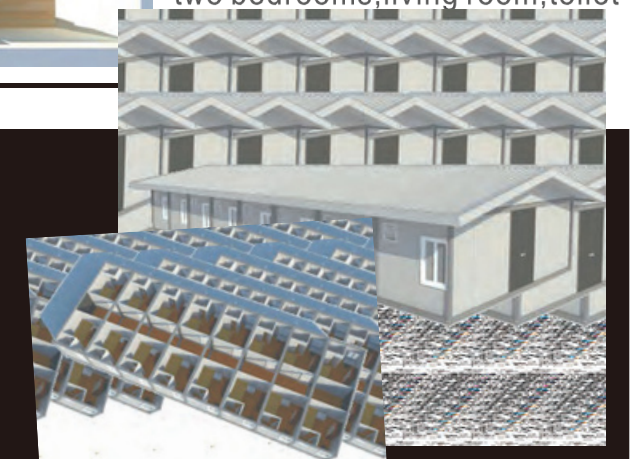
3M×12M×2.8H
3M×9M×2.8H
two bedrooms, living room, toilet

30FT Container house

Suitable for large camp project



3M×9M×2.8H



9M×24M×2.8H

LIGHT STEEL VILLA

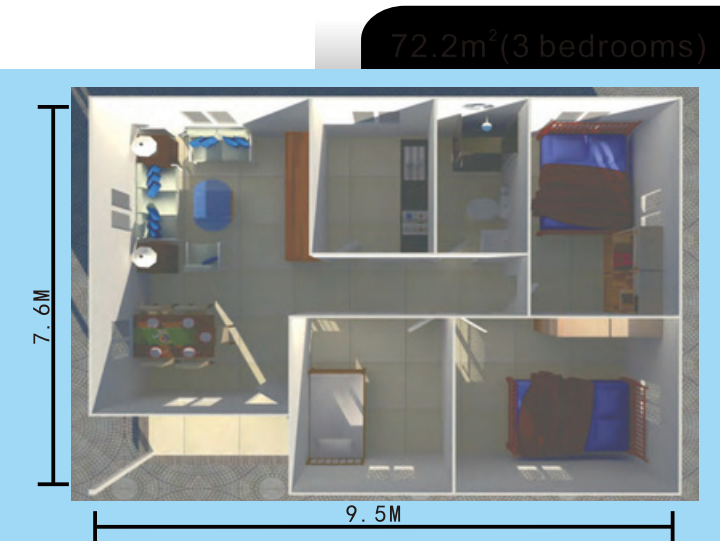
(Steel structure, sandwich panel for wall and roof, steel doors and aluminum sliding windows.)



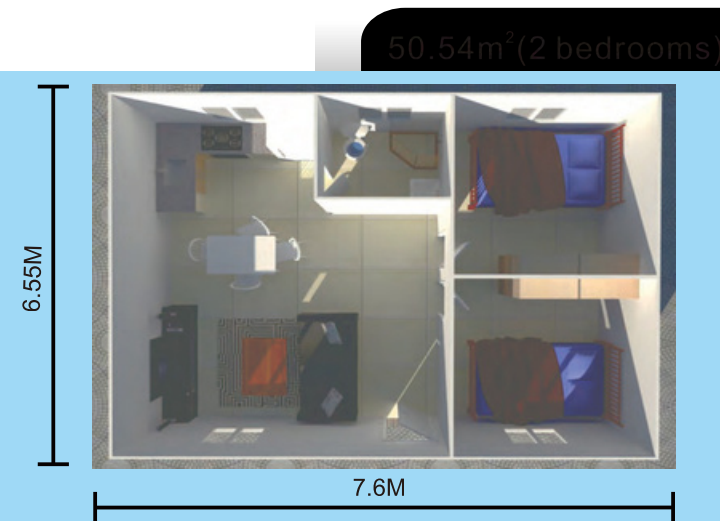
Sandwich panel villa(simple villa)



Sandwich panel villa(simple villa)

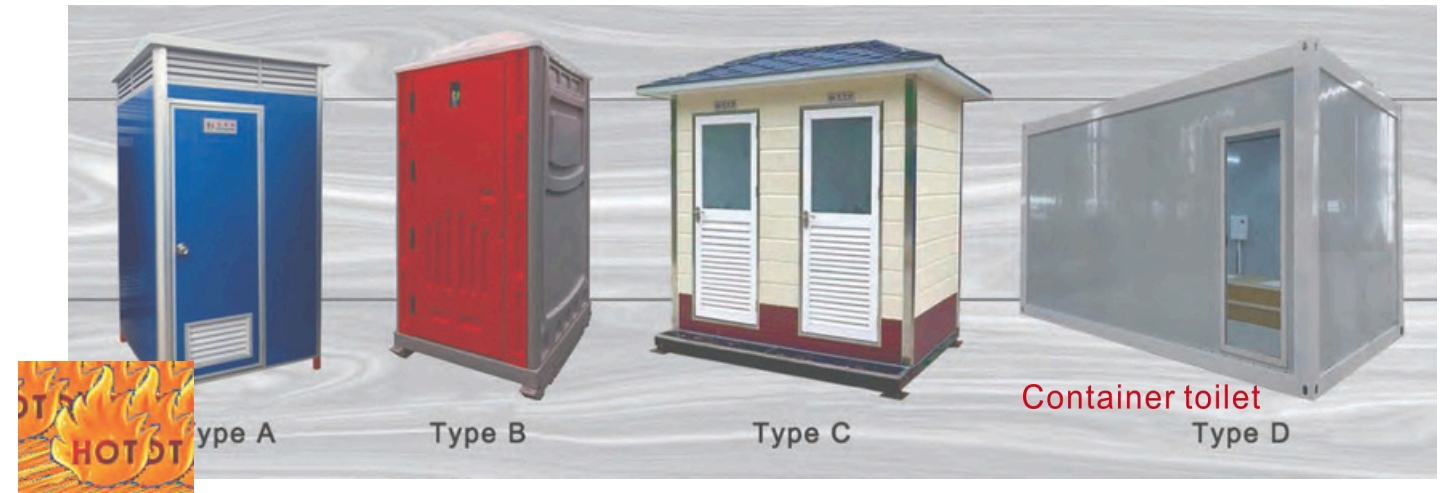


Luxury concrete villa



PORTABLE TOILETS

(These portable toilets are widely used in playgrounds, parks, construction sites & labor camp.)



Type E



Container toilet Inside



Sandwich panel toilet



HDPE toilet

STEEL SHEDS

(These steel sheds warehouse can use the single steel sheet or sandwich panel for roof and wall. Also can do the brick wall in local.)



cow shed



chicken shed

Installation:



Steel structure



Foundation 1



Foundation 2



Brickwall & panel

