

Monolithic Aluminum Formwork Catalog

KOFORMAS

Aluminum Formwork System

The most important aspect of a successful structural construction is the formwork system. KOFORMAS will always offer you the most reliable, safe and up-to-date formwork system technology available on the market.

The KOFORMAS formwork system is based on experience from construction sites around the world and accumulated technical knowledge. Whatever customers need, we will always meet their demands with the most appropriate system.

With our Research and Development department continuously seeking better and newer products, we will maintain our position as the leader of the formwork system ahead of our competitors.

KOFORMAS Formwork Catalog

Our aluminum formwork is made from high-strength aluminum extrusion which, compared to steel formwork, allows for large but lightweight panels.

Our formwork will not only achieve better concrete finishes but also allow for faster construction.



Quality Improvement

Our aluminum formwork produces an unbeatable concrete finish that requires no plastering and eliminates the grinding task due to the joints created by the panels.

Additionally, our engineers will design the stair formwork that meets your specific requirements.



Cost Reduction

Since our aluminum formwork allows for a faster average cycle, it considerably reduces the construction period. Reducing the construction period will directly reduce construction costs.

Additionally, non-structural walls can also be built more efficiently.



Time Saver

The KOFORMAS formwork system allows a single pour of walls, beams, columns, slabs and stairs. Additionally, our prop head system will allow you to remove the slab panels without removing the props. This improves the construction cycle significantly.

01

Rapid assembly

Simplified connection system

02

Simultaneous pouring

All elements in a single operation

03

Efficient stripping

No need to remove props



Very Safe System

Compared to the conventional method, our formwork system will allow a large work area for construction workers (less shoring). Additionally, through reinforcement of the slab from below, workers will feel much safer and more secure.



Increased Safety

Less shoring means more safe working space



Greater Efficiency

Safer workers are more productive



Better Ergonomics

Assembly from below reduces occupational risks



Environmentally Friendly

One of the best advantages of aluminum formwork is its reusability. While conventional formwork generates a large amount of debris (every 3~5 floors built there is a floor of debris), aluminum formwork can be reused more than 1000 times.

Reusability

Aluminum formwork can be used multiple times without degradation

Recycling

After its useful life, the panels can be completely recycled

Zero Waste

No environmental damage is created and produces less construction waste



Features

KOFORMAS Aluminum Formwork Features

- No heavy equipment**

No cranes or other heavy equipment are required. Allows pouring walls, slabs, beams, columns, and stairs in a single concrete pour.
- Efficient dismantling**

Dismantle slab panels without removing props. Can form concrete columns and beams together.
- Simple labor**

NO skilled labor is required. Suitable for single-family and multi-family housing.
- Total versatility**

Suitable for high-rise buildings. Formwork equipment adapts to different designs.



Technical Specifications

Specification	Unit	Value
Material	-	Aluminum (A6061-T6)
Specific Gravity	-	2.7
Allowable Bending Stress	kg/cm ²	1,250
Young's Modulus	kg/cm ²	7.0 x 10 ⁵

Composition

- Wall panel
- Slab corner and beam panel
- Slab panel and prop heads with shoring

Accessories

- Reusable flat ties, PVC sleeve
- Pin and wedge
- Aligner bracket
- Tools for installation and dismantle

Key Benefits



+ Speed

Faster construction cycles



+ Quality

Superior concrete finish



+ Safety

Safer work environment



+ Cost

Reduced construction costs

Unrivaled Manufacturing Capacity

KOFORMAS manufactures aluminum formwork in Korea using the most advanced automated system, specialized work and the newest computer technology to manufacture the best aluminum formwork system at a competitive price.

100%

Automation

Fully automated manufacturing system

24/7

Production

Continuous production capacity

10+

Countries

Presence in more than 10 countries



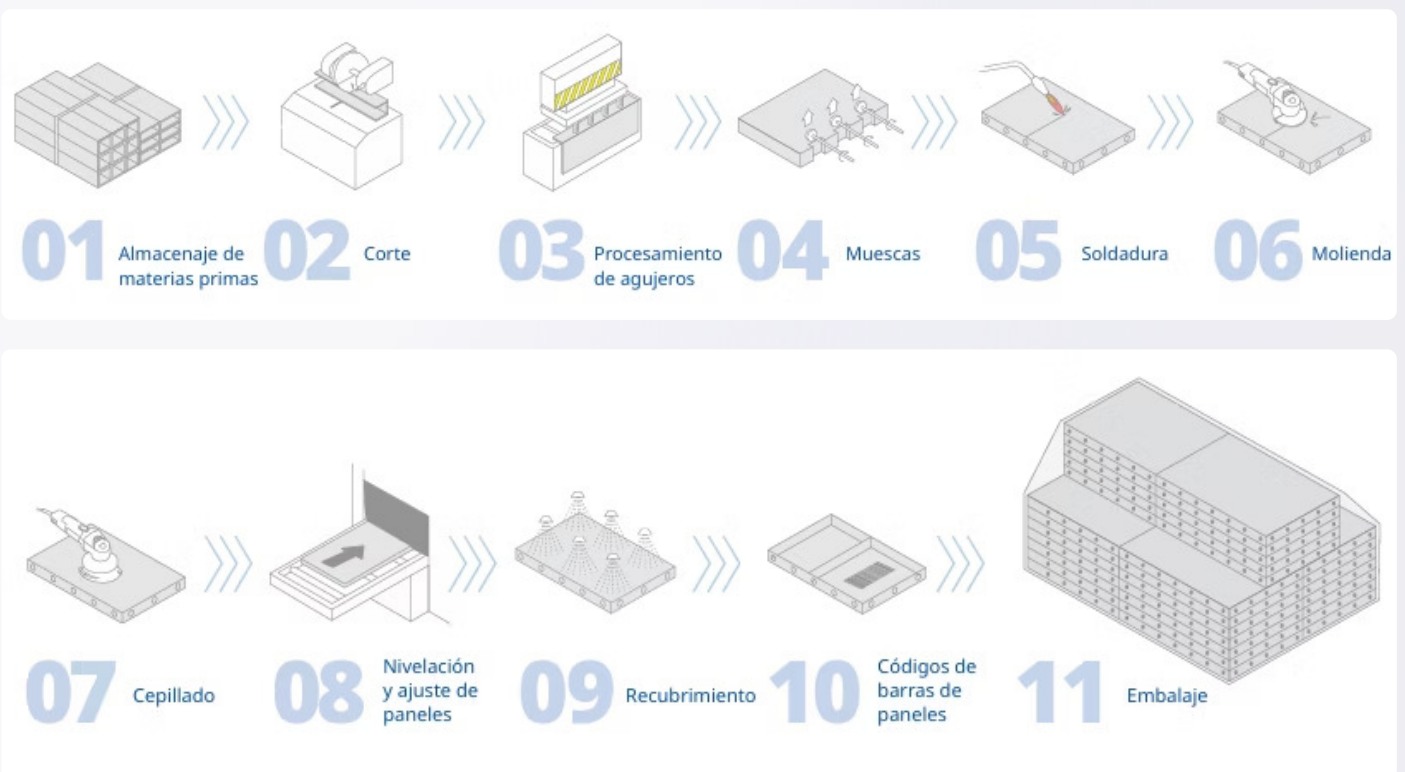
Factory Information

Our production plant manufactures more than 2,400 tons per month of aluminum formwork (105,000 m²/month)



View of the formwork factory

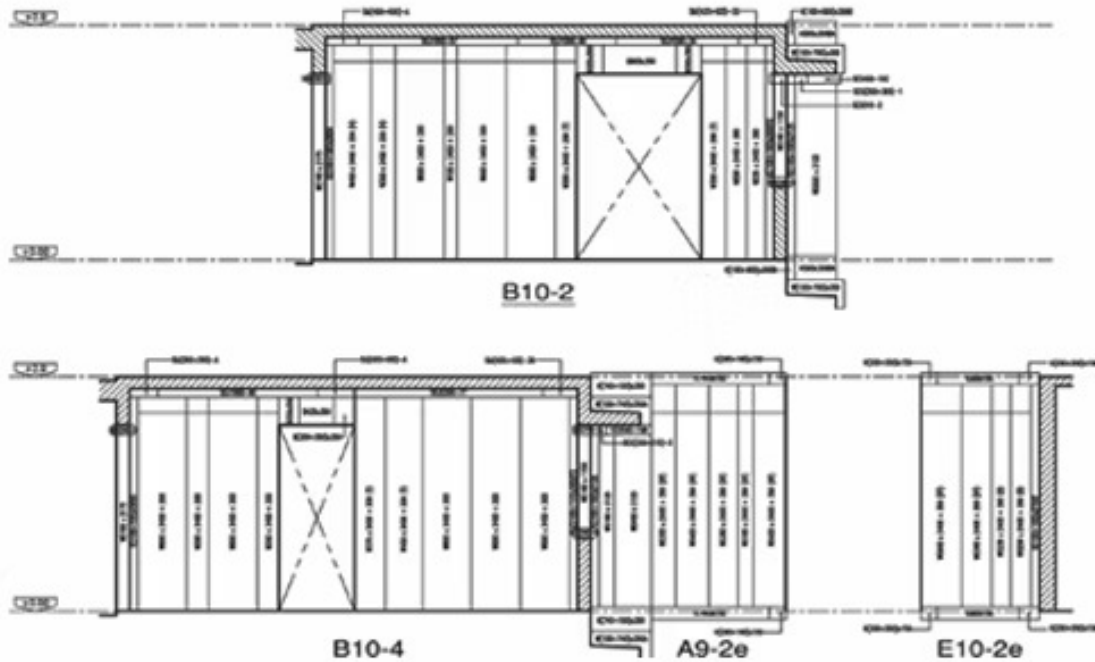
Manufacturing Process



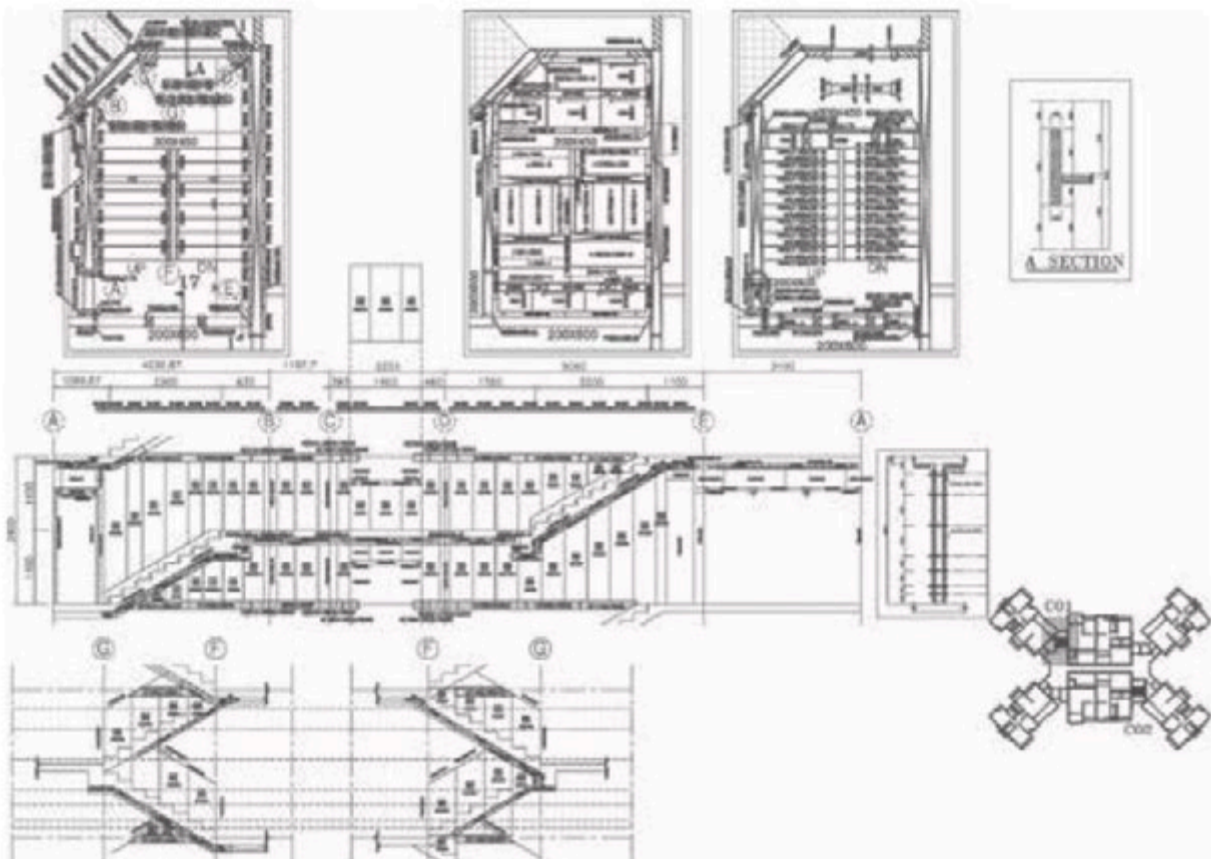
Technical Support

Koformas offers a wide variety of services, from aluminum formwork design in CAD to consulting services with emphasis on commercial and residential construction.

+ Elevation Drawing



+ Stair installation design



Rigorous Supervision

We provide strict supervision service to improve efficiency and safety.

The most effective way to achieve a high level of safety when using the formwork system is to have reliable supervision during assembly and concrete pouring.

1

Design Verification

Supervisors must ensure that the delivered formwork is manufactured according to the customer's design

2

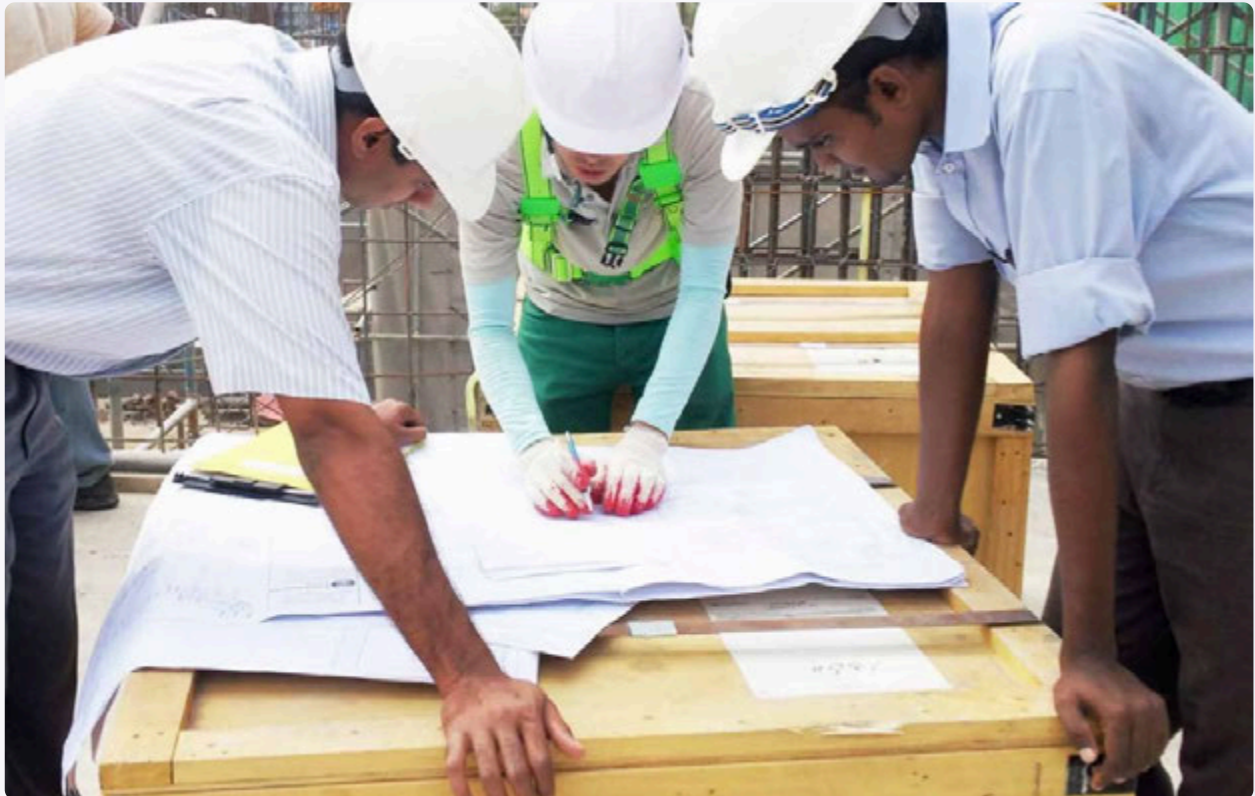
Installation Control

Our experienced supervisors always verify that the formwork is correctly assembled and installed

3

Accident Prevention

Many accidents can occur from handling formwork materials when workers lack experience



Some Projects

Featured Projects

Below are some of the most representative projects where the aluminum formwork system has been successfully implemented.

These projects range from residential constructions to large commercial and industrial buildings, demonstrating the adaptability of the KOFORMAS system to various architectural and structural requirements.



Residential Projects

These residential projects demonstrate the capacity of the KOFORMAS system to adapt to different architectural designs, providing high-quality finishes and significantly reducing construction times.



Commercial Projects

Construction Efficiency

Commercial projects require tight delivery times and the KOFORMAS system allows you to meet these deadlines

Superior Quality

The finishes obtained eliminate the need for additional plastering work

Architectural Versatility

Adaptation to complex designs and specific project requirements



Real Estate Projects

Real estate projects present unique challenges in terms of scale and structural complexity. The KOFORMAS system has demonstrated its capacity to handle these demands with excellent results.

Planning

Design adapted to specific industrial requirements



Execution

Efficient implementation with specialized technical supervision

Control

Continuous quality verification and compliance with specifications



Social Projects

Social projects require robust and reliable solutions. The KOFORMAS system has been successfully implemented in various social projects, demonstrating its capacity to handle complex and large-scale structures.



Foundations

Solid base for large-scale structures



Main Structure

High-strength structural elements



Finishes

Superior quality finishes



Emblematic Project

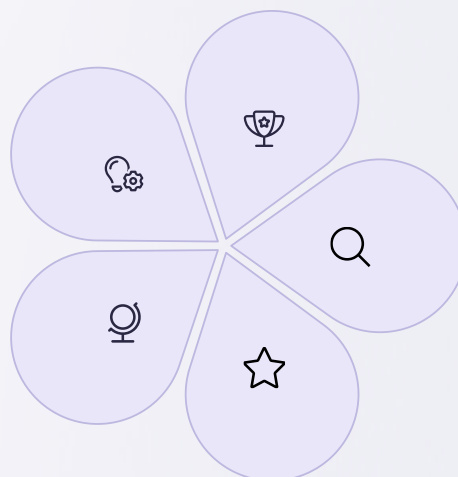


This emblematic project represents the culmination of years of experience and expertise in aluminum formwork systems.

KOFORMAS continues to lead the aluminum formwork industry, providing innovative solutions that transform the way we build around the world.

Innovation
Cutting-edge technology

Global Reach
International presence



Quality
Superior standards

Efficiency
Process optimization

Sustainability
Environmental respect